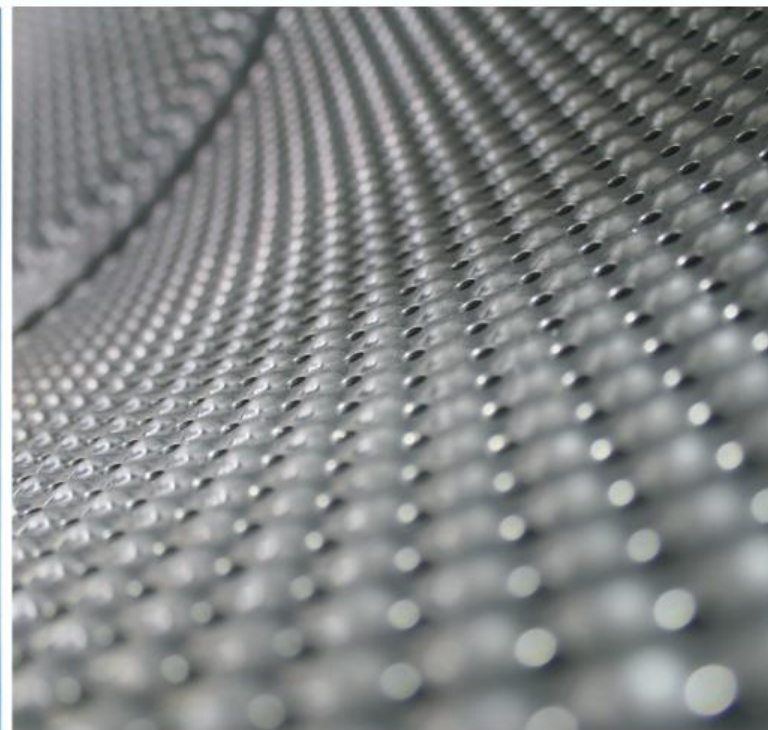


Product Sales Guide SC65 & DAM6

Version: 1.1



Professional Washer-Extractor and Dryer

xtreme
in innovation

www.primuslaundry.com

Design

- Washer and dryer in the same look
- Stackable
- Reversing door on the dryer



Washer introduction

SC65



- Drum volume 60 litres
- Capacity max 6.5 kg
- Spin speed 1400 rpm / 530 G

- Electrical heating 3 kW
- Drain Drain or pump

Professional washing machine construction

laundry equipment



Construction

- Quattro™ - four shock absorbers
- Cast iron counter weights
- SKF ball bearings
- No rubber bellow
- Stainless steel drums
- Long life tested – 10.000 hours*
- Active Drum™



**equivalent to approximately 20 years of domestic use*

Cast iron rear gable

- Sturdy construction
- Allows high spin speed
- Optimal durability



Door



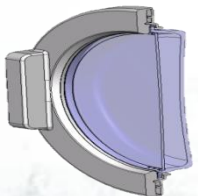
- Front door – metal glass door frame (professional design)

- Opening angle - 180°



- Single pivot hinge design

- Double insulated glass door to ensure outer surface temp not to exceed 60°C above room temperature



- Door locking is supported by a from opening pre-tensioned spring in order to reduce door closing force.

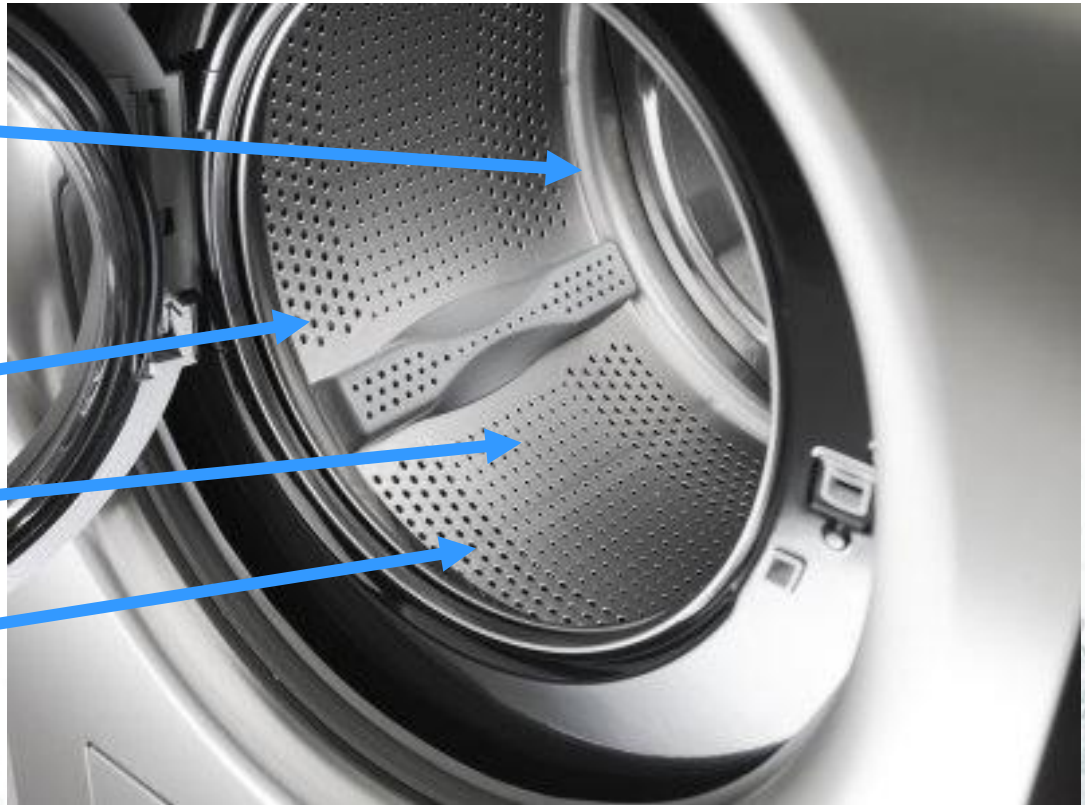
NEW Enlarged Drum

- 60 l drum volume
- 31 cm door opening
- Reinforced door hinges



NEW Active Drum™

- **Angle on drum edges:**
 - Together with the lifters the load moves to the centre
 - Less wear on delicate items
 - Better balance in the drum
- **Drum periphery:**
 - Flange around all cylinder holes for optimal gentleness
- **Gentle area evacuation holes:**
 - Diameter: 2,2 mm
- **“Large” evacuation holes:**
 - Diameter: 3,7 mm



NEW Lifters

- "Hourglass" shaped lifters will:
 - Guide load to the more gentle center area of the cylinder
 - Guide large "items" such as gravel to the **large evacuation holes** in the lifter edges (rat holes).



Lifts are removable

- Three light/reinforced lifters which are easy to remove.
- Makes it easy to remove MOP-cloth remains.



Motor

- Induction motor
- No brushes
- 1400 rpm
- Increased life time (+20%)
- Low noise level



**equivalent to approximately 20 years of domestic use*

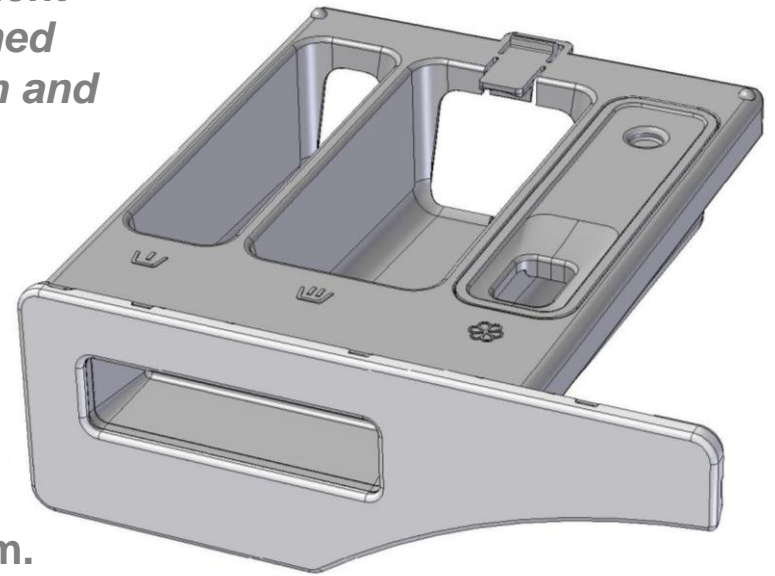
Soap hopper

- Prepared for liquid soap connection (up to six chemicals)
- Possible to lock detergent compartment in combination with automatic dosage system



Soap hopper

- Automatic cleaning of detergent compartment
– *The detergent compartment will be cleaned after every 10th cycle between main wash and first rinse (not on label program).*
- Compartment with steel front
- Prepared for liquid soap connection (up to six chemicals)
- Possible to lock detergent compartment in combination with automatic dosage system.



Heating

- Heater 3000 W standard
- System that assures that chosen temperature are reached & kept during wash cycle (disinfections programs)
- Real temperature shown in the display (default off, possible to switch on)
- The washers are equipped with acid resistant stainless steel heater elements



Drain

Drain pump



Aqua-block™ system

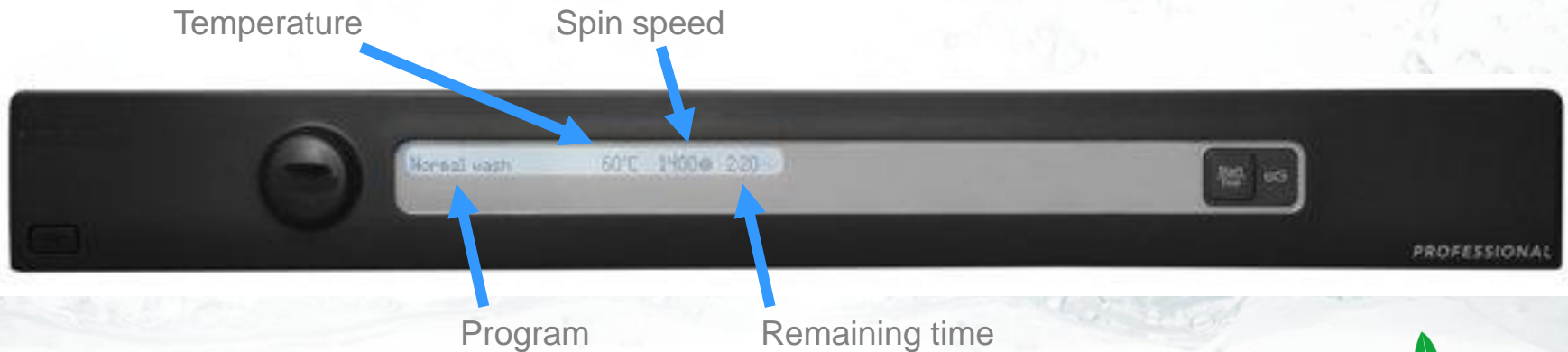
Drain valve



Shorter programming time

Programmer

- ONE Push and then start!
- Fixed programmes
- Remaining time indication
- Communicates in 12 different languages
- Memory function – last used programme in display
- No option buttons



Programmes

Disinfection programmes for: Health Care, Institutions etc.

- **90°C:** Pre-wash, main wash at 92°C + 10 min wash cycle (reheat if temp. < 91°C), rinse, spin, rinse, spin, rinse and final spin
- **60°C:** Pre-wash, main wash at 65°C + 20 min wash cycle (reheat if temp. < 61°C), rinse, spin, rinse, spin, rinse and final spin. Combined with specific detergent for proper disinfection
- **40°C:** Pre-wash, main wash at 45°C + 20 min wash cycle (reheat if temp. < 41°C), rinse, spin, rinse, spin, rinse and final spin. Combined with specific detergent for proper disinfection.
- **Disinfection**
 - Fulfils RKI-requirements (Robert Koch-Institute) for DGHM detergents (Deutsche Gesellschaft für Hygiene und Mikrobiologie)
 - Maximum temperature reached during cycle shown in display (possible to switch off)
 - 40, 60, 90 °C

Programmes

Mop programme for cleaning companies

- NEW: Pre-wash
- 90°C: Main wash 90°C, high water level, rinse, spin cycle, rinse and final spin
- 60°C: Main wash 60°C, high water level, rinse, spin cycle, rinse and final spin



Programmes

Programme for Industrial microfibre towels



- 60°C: Main wash at 60°C, high water level (+4 min wash cycle), rinse, spin, rinse, rinse and final spin.
- 40°C: Main wash at 40°C, high water level (+4 min wash cycle), rinse, spin, rinse, rinse and final spin.

Programmes

Designe your own special programmes

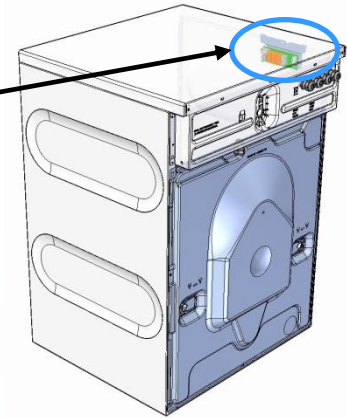
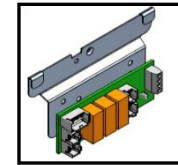
- Service staff will be able to create customized programmes via user interface (Programme A, B, C)
- Pre wash:
 - Number (0-3)
 - water level (normal/ high)
 - time (1-15 min)
 - temperature (25° - 60°)
- Main wash:
 - Time (0-60 min)
 - water level (normal/ high)
 - temperature (30°- 92°)
 - re-heat (off / on)
- Rinse & Spin:
 - Number of rinses (1-7)
 - spin speed (0-1400)
 - spin time (0-300 sec)



Connection to external dosing system

Kit number ASK8801495

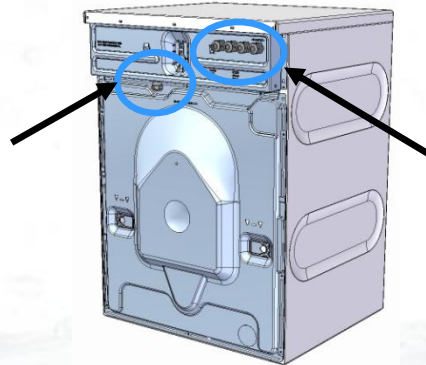
- Relay board for easy connection and handling of signals for pump activation (signal time = activation time of components):
 - * Pre-wash
 - * Main wash
 - * Final rinse
- Is positioned on the LH side close to the detergent compartment underneath the steel top



- Nock-out hole positions:

Available:

Nock-out hole for easy routing of electrical harness



New:

Nock-out holes for easy routing of detergent hoses

Transport data

		SC65
Net weight	kg	73
Cardboard packing	kg	77
Carboard packing volume	m³	0,53
Dimensions (HxWxD)	mm	915x610x660

Dryer introduction

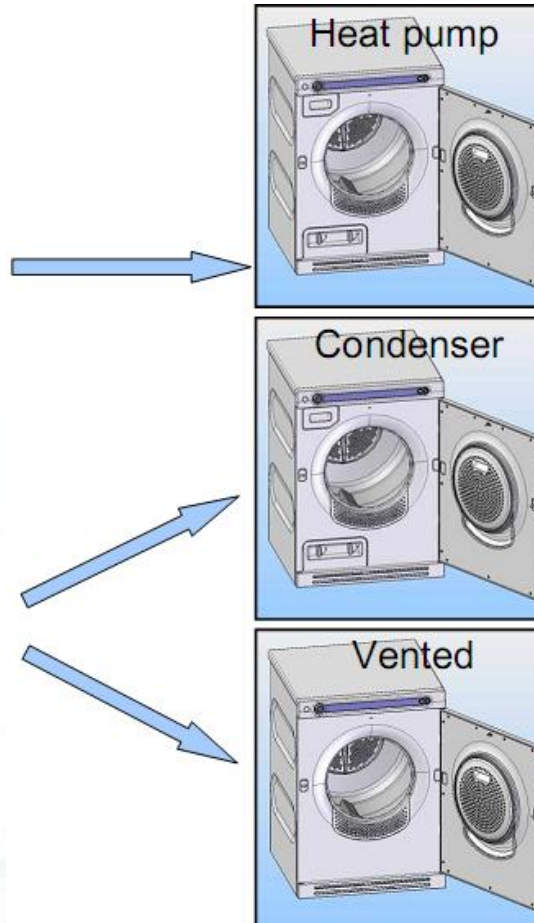
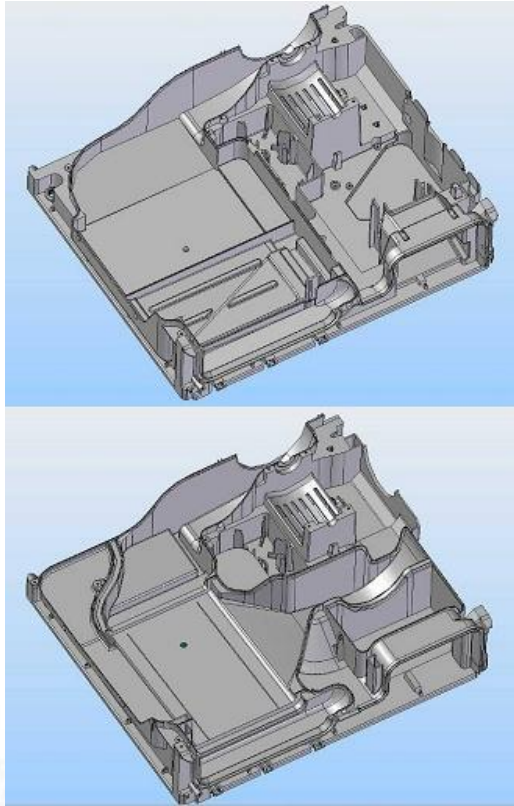
DAM6



- Drum volume 112 litres
- Capacity max 7 kg
- Vent Vented, condense or heat pump
- Electrical heating 3 kW (vented)
2,5 kW (condense)
1,3 kW (heat pump)

Professional dryer construction

New modular platform



DAM6 HP

DAMC6

DAM6

Professional dryer construction

laundry equipment



Fan

- Unique cleneable fan
- Easy to clean yourself!
- Saves service calls & money

- Airflow: 123 m³/h (condense)
245 m³/h (vented)
internal (heat pump)



Double lint filter

- Prevents lint from gathering in the machine
- Increases lifetime!
- Lint filter detection
– Not possible to run without filter
- Self-cleaning condenser filter
(available for heat pump version)



Programmer

- Push and go!
- 7 fixed automatic programmes
- Communicates in 12 different languages
- Remaining time
- Memory function – last used programme in display
- No option buttons



Program duration

Improved airflow = short drying time

- **Heat pump: <70 minutes on Auto normal dry!***
- **Condenser: <70 minutes on Auto normal dry!***
- **Vented: <40 minutes on Auto normal dry!***

** Test load: 6,5 kg cotton load from 50% res. moisture -> 0% res. moisture*

Programmes

- You can choose the best suitable programme for your clothes!
- A high temperature minimizes the drying time
- Low temperature for drying sensitive fabrics such as nylons, acrylics, rayons and acetates
- 7 preset sensor controlled programme:
 - P1: Auto extra dry
 - P2: Auto dry
 - P3: Auto normal dry – Label prog
 - P4: Auto extra dry - low temp
 - P5: Auto dry - low temp
 - P6: Auto normal dry - low temp
 - P7: Auto iron dry

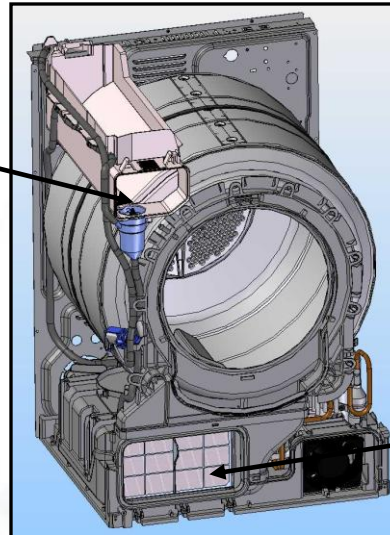
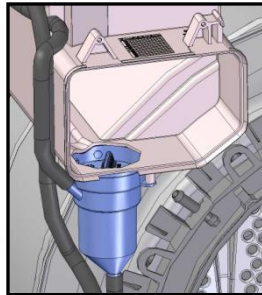


Heat pump version

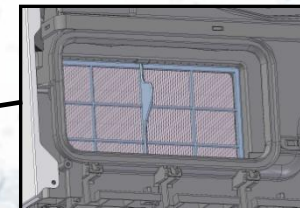
Self cleaning condenser filter on heat pump dryer

- The “condenser” will be equipped with an automatic self cleaning filter system (high pressure water flushed).
- Not available on condenser dryers.

Water filter for lint residuals (has to be emptied every 10:th cycle – display reminder)

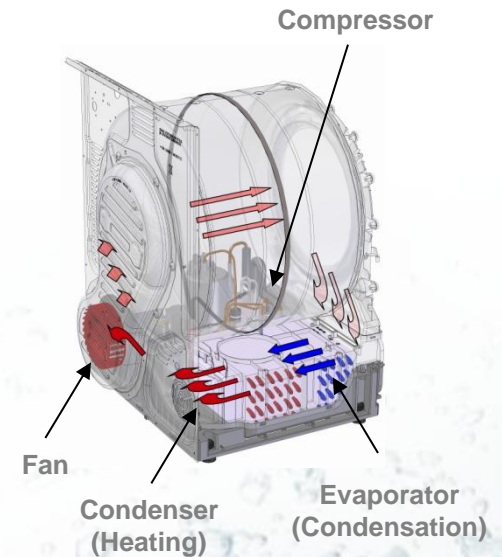


Condenser filter with nozzle pipe



Heat pump version

- New heat pump dryer has **A-50%** in energy consumption (0,24 kW/kg)
- The heat pump use the air in the drum in one internal re-circulating air circuit and no external air is taken in.
- The air is heated in the condenser
- Then it runs through the drum and at $>40^{\circ}\text{C}$ (Low) or 40°C (Normal), transporting moist air out of the drum
- When the moist air comes back to the evaporator it is cooled down and condense into water drops and is **evacuated through the attached exhaustion pipe** or gathered in the condenser tank
- The air then continues back through the condenser and dry warm air runs through the drum
- The compressor drives the refrigerant which has the capacity to condense moist air at quite low temperatures (30°C).
- Thanks to the refrigerants capacity the evaporator can have a "cold" part where moist air is condensing and becomes "dry" and at the same time it use the temperature difference to "pump up" the temperature in the warm area in the condenser.
- The energy that is cooled away inside the evaporator is re-used to heat the same air inside the condenser.
- Therefore much more efficient than Condenser and Vented dryers.



Other features

- Prepared for coin operation
- Buzzer (option by service technician)
- Indication of lint filter cleaning as display reminder
 - *default every 2nd cycle*
 - *possible to adjust stepless from 0 (no display reminder) to 10 cycles at maximum*
- Indication of full condenser tank (draining needed)
- Number of cycles and failure codes continuously logged in log file
- Log file access are available by service technicians.

Transport data

		Vented	Condense	Heat pump
Net weight	kg	39	47	52
Cardboard packing	kg	45	50	56
Carboard packing volume	m ³	0,53		
Dimensions (HxWxD)	mm	915x610x660		

This is a non-binding and indicative tool made available to Primus distributors for internal use only. Proprietary rights with regard to this tool belong to Primus CE s.r.o. No guarantee can be given that its results are up-to-date and accurate and it should therefore be used with particular circumspection. This tool should by no means be transmitted to any third party or otherwise made public. Please inform Primus' marketing team of any remark you have in respect of this tool.

© 2014 Primus CE s.r.o. All rights reserved.