

PROFESSIONAL TUMBLE DRYER

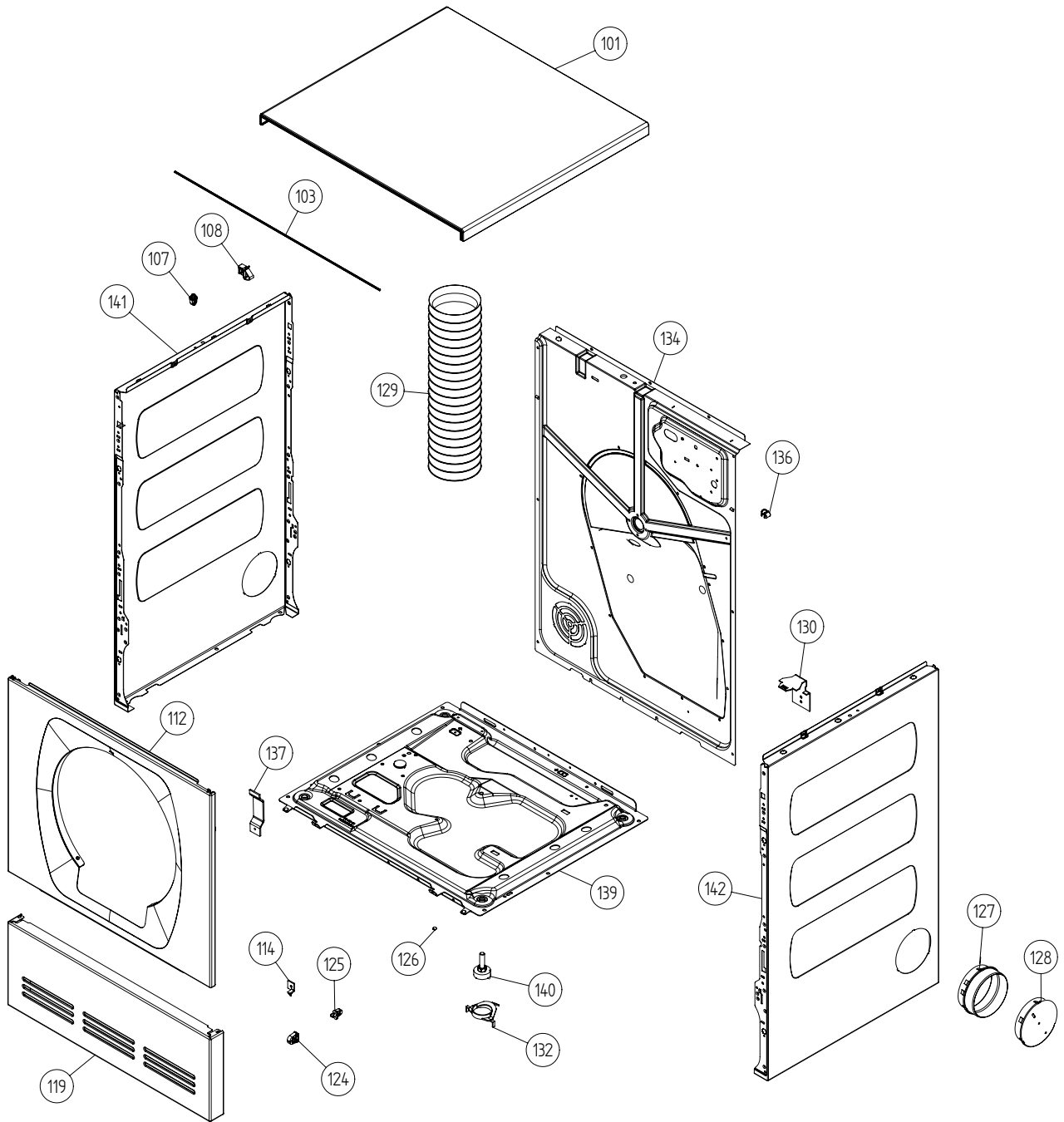
5kg

VENTED VERSION, STAINLESS



SPARE PARTS MANUAL

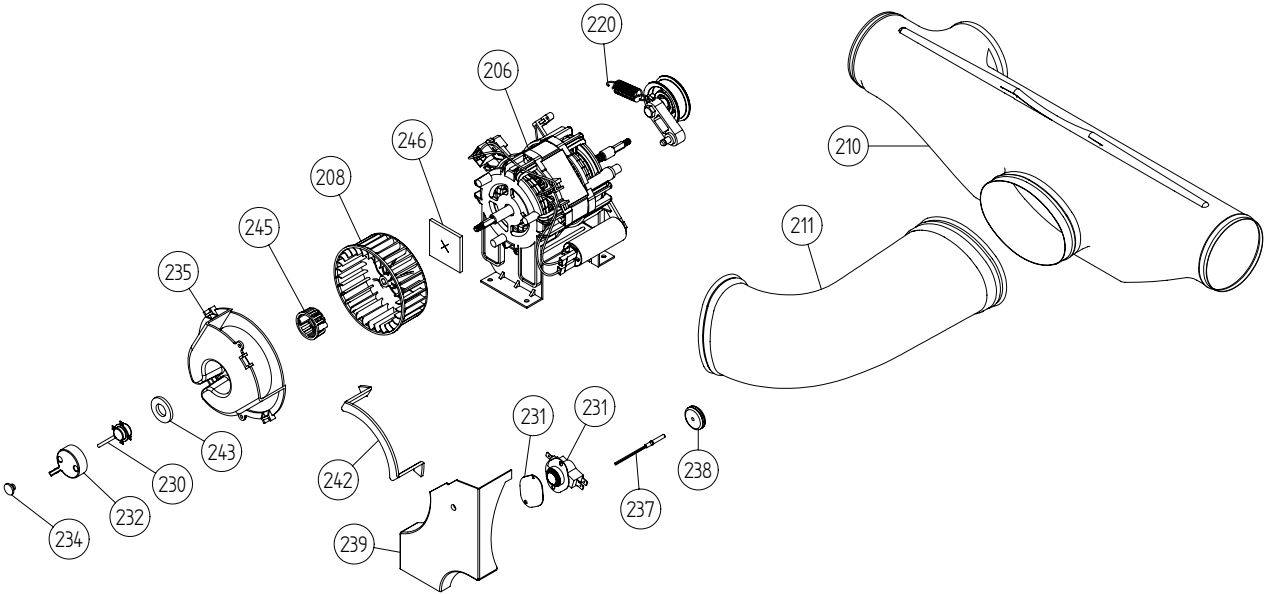
508829 B
Publication date: 3 Apr 2012



Outer casing

(vent) BE - Stainless (TDC33BE)

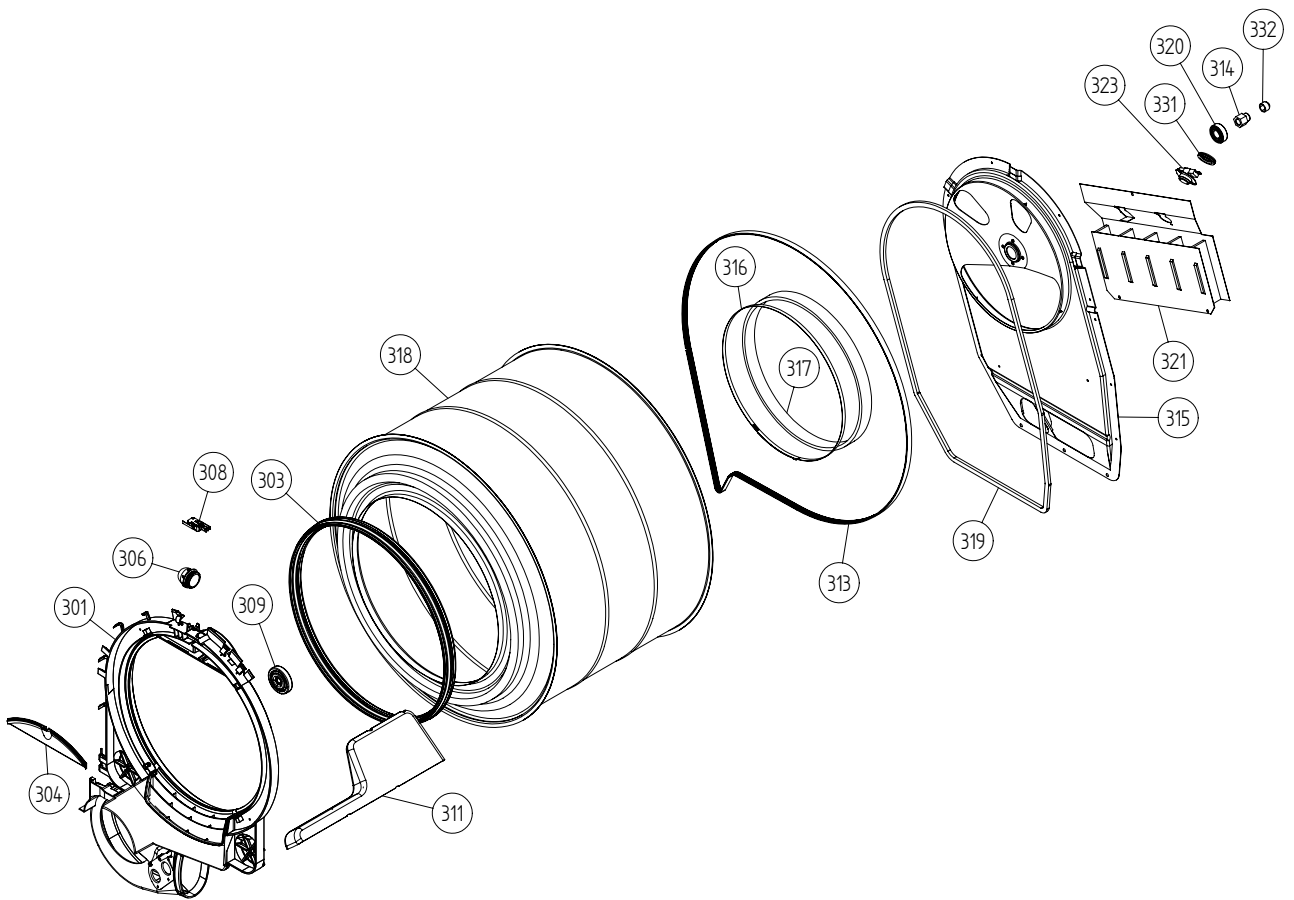
Pos	Spare part No.	Description	Qty	Comment
101	8061817-95	TOP COVER STAINLESS	1 Pc's	
101-a	8900338	SCREW RTK ST 4,2X9,5 FZB WAX.	3 Pc's	
101-b	8901413	LOCK WASHER AZ 4,3 GALV	2 Pc's	
103	8064062	STRIP TOP COVER WMD20 UL4	1 Pc's	
107	8061763	GUIDE FRONT PLATE/TOP COVER	2 Pc's	
108	8061916	CABLE HOLDER WMD20 UL4	2 Pc's	
112	8061847-95	FRONT PLATE TD20 STAINLESS	1 Pc's	
112-a	8900338	SCREW RTK ST 4,2X9,5 FZB WAX.	2 Pc's	
112-b	8901413	LOCK WASHER AZ 4,3 GALV	2 Pc's	
114	8064177	HOOK LOWER PANEL UL4	2 Pc's	
114-a	8900338	SCREW RTK ST 4,2X9,5 FZB WAX.	2 Pc's	
119	8801247-95	LOWER COVER COMPL.W.CLIPS TD20	1 Pc's	
124	8065264	BINDING CLIP TD21	2 Pc's	
125	8065265	BINDING CLIP TD21	2 Pc's	
126	8061929	SUPPORT FOR LOWER COVER	2 Pc's	
127	8052641	STUB EXHAUSTCANAL UL4	1 Pc's	
128	8052640-33	LID EXHAUST CANAL BLACK	2 Pc's	
129	8064115	AIR HOSE WITH CABLE STRIP	1 Pc's	
130	8053980	TIP GUARD SURFACE CONDITIONED	2 Pc's	
132	8064114	CUP SELF ADHESIVE,IN BAG(2pcs)	1 Pc's	
134	8064196	REAR PANEL OUTER PUNCHED	1 Pc's	
134-a	8900338	SCREW RTK ST 4,2X9,5 FZB WAX.	10 Pc's	
136	8061915	CABLE HOLDER TD20	1 Pc's	
137	8063852	HOLDING PLATE, MAGNET LOCK	1 Pc's	
137-a	8901619	POP-RIVET AL/ST 4X10	2 Pc's	
139	8061618	BOTTOM WMD20	1 Pc's	
140	8059334	RUBBER FOOT D35xM10 INC. NUT	4 Pc's	
141	8801175-95	SIDE PLATE COMPL.LEFT TD20 EXH	1 Pc's	
142	8801176-95	SIDE PLATE COMPL.RIGHT TD20EXH	1 Pc's	



Lower session

(vent) BE - Stainless (TDC33BE)

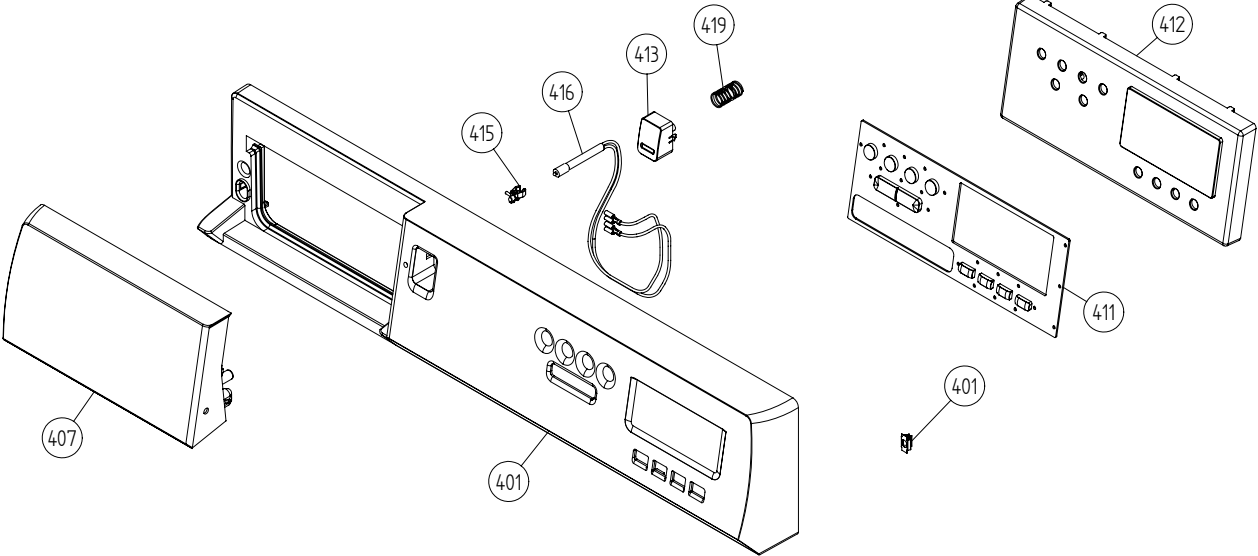
Pos	Spare part No.	Description	Qty	Comment
206	8061824	MOTOR COMPL. TD20	1 Pc's	
206-a	8901969	SCREW MRT-TT 5x12 FZB T20	4 Pc's	
206-b	8054268	CAPACITOR 8 UF 400V 85GR	1 Pc's	
208	8055200	FAN IMPELLER INT.	1 Pc's	
208-a	8901192	NUT LOCKING 6 BH8 GALV	1 Pc's	
210	8052638	EXHAUSTCANAL T-TUBE UL4	1 Pc's	
211	8052639	EXHAUSTCANAL BEND UL4	1 Pc's	
220	8801214	TENSION ARM W.BALL BEARING	1 Pc's	
230	8061855	HUMIDITY SENSOR TD20 UL4	1 Pc's	
230-a	8902042	SCREW PTK 35X10 WN1452 FZB T10	2 Pc's	
231	8065306	THERMOSTAT 70	1 Pc's	
231	8056029	THERMOSTAT 70/59	1 Pc's	
231	8050091	COVER PLATE FOR THERMOSTAT	1 Pc's	
231-a	8902042	SCREW PTK 35X10 WN1452 FZB T10	1 Pc's	
231-a	8900369	SCREW RTS 4,8X13 FZB T25	1 Pc's	
232	8061944	FRONT GUARD HUMIDITY SENSOR	1 Pc's	
234	8061959	PLUG HUMIDITY SENSOR/REAR PAN.	2 Pc's	
235	8061899	FAN CASING LID TD20 UL4	1 Pc's	
235	8076330-0	FAN CASING LID UL4	1 Pc's	
235-a	8902042	SCREW PTK 35X10 WN1452 FZB T10	2 Pc's	
237	8061900	THERMISTOR UL4 TD20	1 Pc's	
238	8053050	GROMMET	1 Pc's	
239	8061942	GUARD FAN CASING TD20	1 Pc's	
239-a	8902042	SCREW PTK 35X10 WN1452 FZB T10	1 Pc's	
242	8064184	SEALING COVER FAN HOUSE	1 Pc's	
243	8063897	SEALING HUMIDITY SENSOR	1 Pc's	
245	8061943	GUARD HUMIDITY SENSOR TD20	1 Pc's	
246	8058323	SHAFT SEAL DRYER	1 Pc's	
	528227	TOROIDAL TRANSFORMER 400VA	1 Pc's	



Cylinder and related parts

(vent) BE - Stainless (TDC33BE)

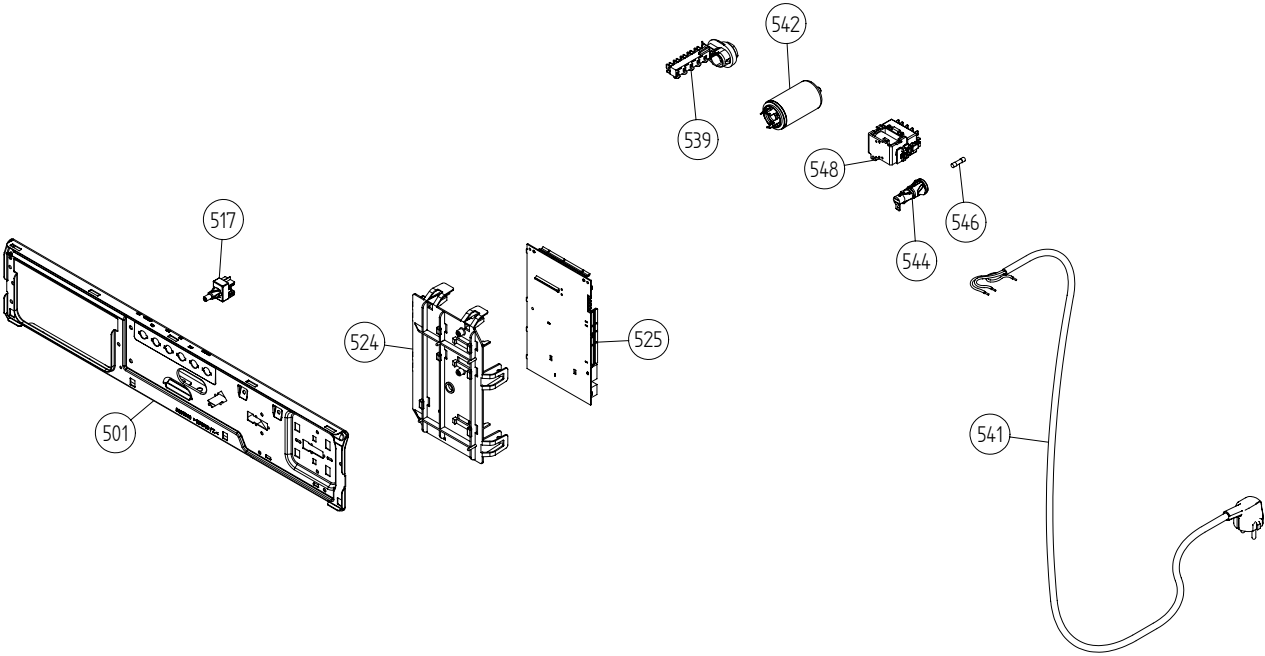
Pos	Spare part No.	Description	Qty	Comment
301	8801216	FRONT FRAME COMPL. TD20/21	1 Pc's	
301-a	8902066	SCREW A2-PTK 35X14 WN1453 PF	4 Pc's	
303	8061821	FELT SEAL FRONT	1 Pc's	
304	8061932-49	LAMP HOUSING LID GREY UL4	1 Pc's	
306	8061887	LAMP CHIMNEY ULTEM TD20 UL4	1 Pc's	
308	8053107	MICROSWITCH DOOR	1 Pc's	
309	8052622	SUPPORT ROLLER COMPLETE	1 Pc's	
311	8052589	PADDLE,TT	2 Pc's	
311-a	8902099	SCREW PTK 50X14 WN1452 FZB T20	5 Pc's	
313	8065710	DRIVEBELT 7PH 1970 AS5B AIRBAG	1 Pc's	
314	8052632	BEARING BUSH	1 Pc's	
315	8061851	REAR PANEL INNER TD20	1 Pc's	
315-a	8900369	SCREW RTS 4,8X13 FZB T25	13 Pc's	
316	8055054	FELTSTRIP CLAMP REAR	1 Pc's	
317	8052649	FELT STRIP REAR, SEWN	1 Pc's	
317	8064440	FELTSEALING REAR	1 Pc's	
318	8061800	CYLINDER COMPL. TD20	1 Pc's	
319	8059712	SPONGE RUBBER STRIP 6X9X1650	1 Pc's	
320	8004439	BALL BEARING SKF 6202-2Z/C3Q66	1 Pc's	
321	8061833	HEATING ELEMENT 2620W TD20 UL4	1 Pc's	
321	528229	HEATING ELEMENT 440V /1900+600W	1 Pc's	
321-a	8900369	SCREW RTS 4,8X13 FZB T25	2 Pc's	
323	8008487	THERMOSTAT 26237430 150C	1 Pc's	
323-a	8900369	SCREW RTS 4,8X13 FZB T25	1 Pc's	
331	8052650	DIAPHRAGM OVERHEAT.PROTECTOR	1 Pc's	
332	8064151	CAP OF BOLT	1 Pc's	



Control panel

(vent) BE - Stainless (TDC33BE)

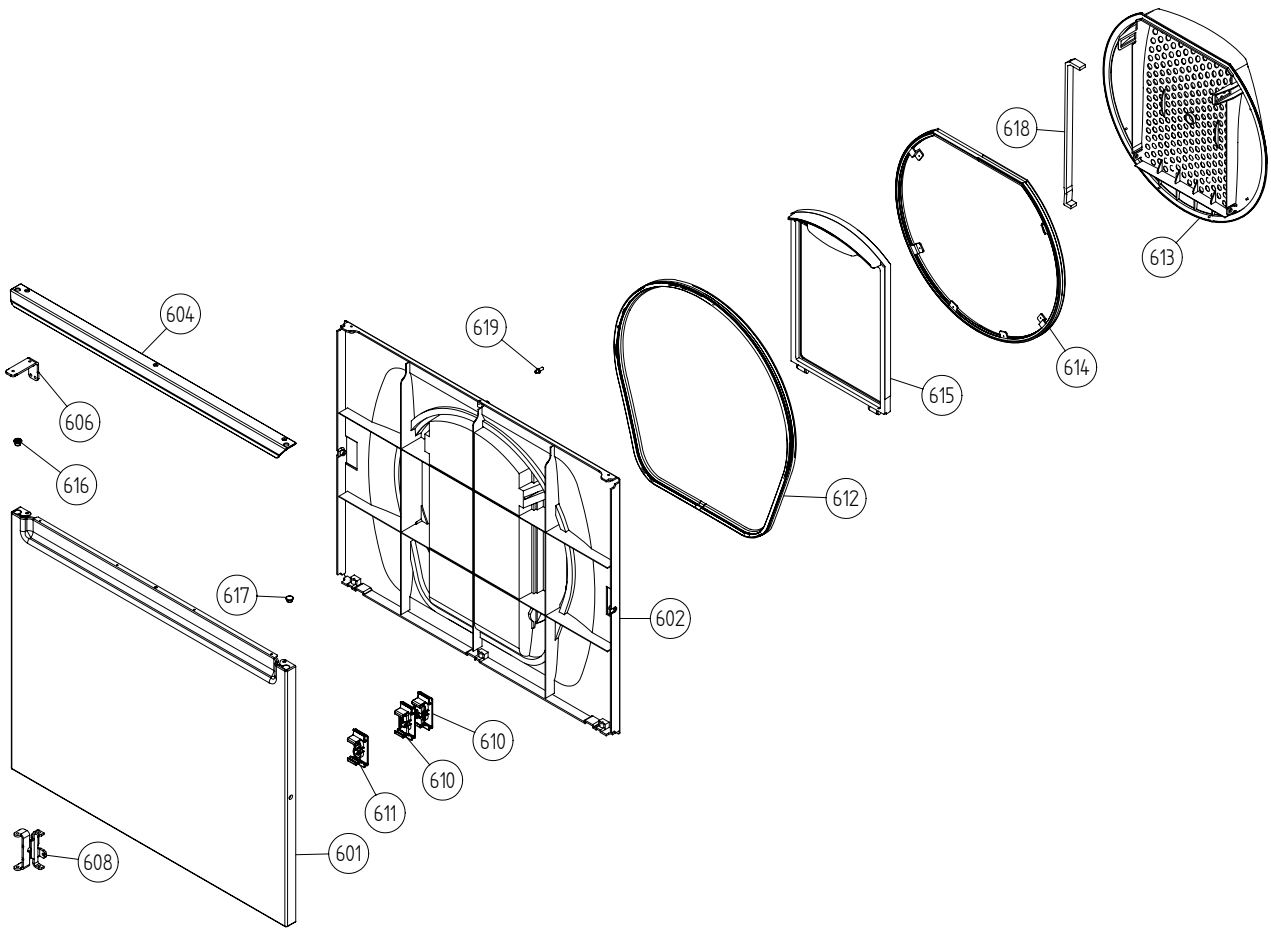
Pos	Spare part No.	Description	Qty	Comment
401	8077481-69	PANEL W.HANDLE PRIMUS	1 Pc's	
401	8077481-69	PANEL W.HANDLE PRIMUS	1 Pc's	
401-a	8901591	BINDING CLIP SCO 5740	4 Pc's	
407	8061782-69	HANDLE PANEL OEM MECH.	0 Pc's	
411	8063991-33	PUSHBUTTONS TDC33/44 OEM	1 Pc's	
412	8076272	DISPLAY UNIT OEM WMD21UL4*ESD*	1 Pc's	
412	8076272	DISPLAY UNIT OEM WMD21UL4*ESD*	1 Pc's	
413	8061950-69	PUSHBUTTON MAINSWITCH OEM	1 Pc's	
415	8061822	DECOR LENS	1 Pc's	
416	8007073	IND.LAMP 42 42 001 000 001	1 Pc's	
419	8061857	SPRING MAIN SWITCH WMD20	1 Pc's	
490	8065471	INSTA./MAINTE.MANUAL PRIMUS GB	1 Pc's	
490	8065472	INSTA./MAINTE.MANUAL PRIMUS FR	1 Pc's	
490	8065473	INSTA./MAINTE.MANUAL PRIMUS NL	1 Pc's	
490	8065474	INSTA./MAINTE.MANUAL PRIMUS ES	1 Pc's	
490	8065475	INSTA./MAINTE.MANUAL PRIMUS DE	1 Pc's	
490	8065476	INSTA./MAINTE.MANUAL PRIMUS IT	1 Pc's	
490	8076253	INSTA./MAINTE.MANUAL PRIMUS GB	1 Pc's	
490	8076254	INSTA./MAINTE.MANUAL PRIMUS FR	1 Pc's	
490	8076255	INSTA./MAINTE.MANUAL PRIMUS NL	1 Pc's	
490	8076256	INSTA./MAINTE.MANUAL PRIMUS ES	1 Pc's	
490	8076257	INSTA./MAINTE.MANUAL PRIMUS DE	1 Pc's	
490	8076258	INSTA./MAINTE.MANUAL PRIMUS IT	1 Pc's	



Upper session

(vent) BE - Stainless (TDC33BE)

Pos	Spare part No.	Description	Qty	Comment
501	8061690	BEAM FRONT WMD20	1 Pc's	
501-a	8900338	SCREW RTK ST 4,2X9,5 FZB WAX.	2 Pc's	
501-b	8901413	LOCK WASHER AZ 4,3 GALV	2 Pc's	
501-c	8902087	SCREW PTK 40X14 WN1452 FZB T20	2 Pc's	
517	8061875	PUSHBUTTONSW. 2-POLE CLOS.	1 Pc's	
524	8061921	HOLDER PROG.CONTROLLER WMD20	1 Pc's	
525	8065241	CONTROL UNIT TDC33/44 UL4	1 Pc's	
529	8087500	CABLE KIT TD/30/33A/40/44A	1 Pc's	
539	8061660	TERMINAL BLOCK 5-POLE	1 Pc's	
539-a	8901097	SCREW MRT-TT 4X12 FZB T20	1 Pc's	
541	8000158-1	MAINS CABLE 5X1.5X2000	1 Pc's	
542	8058558	RADIOINTERF.SUPP. FILTER	1 Pc's	
542-a	8901155	NUT M6M8 BH8 GALV	1 Pc's	
542-b	8901419	LOCK WASHER AZ 8,4 GALV	1 Pc's	
544	8065574	FUSE HOLDER BLACK 6,3A EU/AU	1 Pc's	
544	8054613	FUSE HOLDER HTB38	1 Pc's	
544-a	8055421	FUSE	1 Pc's	
545	8054614	INSERT FUSE HOLDER STM	1 Pc's	
546	8055421	FUSE	1 Pc's	
548	8064179	CONTACTOR 4S 50/60HZ	1 Pc's	



Outer door

(vent) BE - Stainless (TDC33BE)

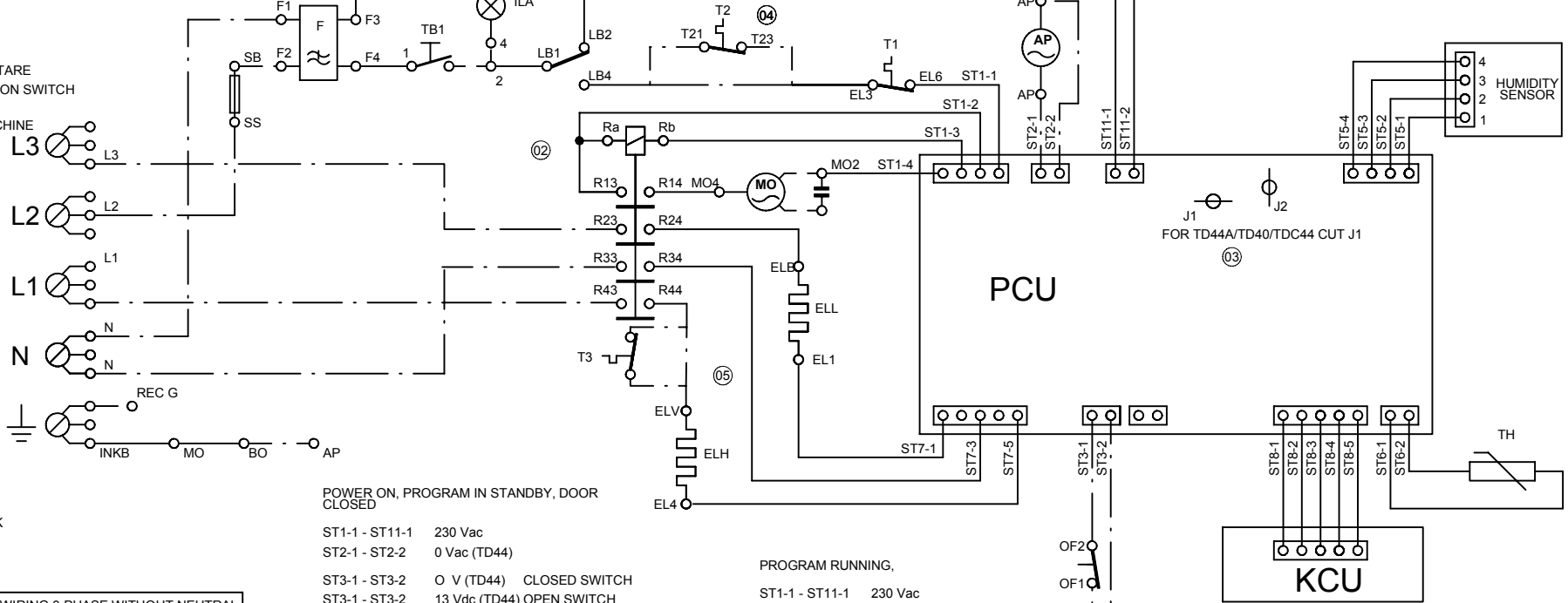
Pos	Spare part No.	Description	Qty	Comment
601	8061733-95	DOOR, OUTER PART SS WMD20	1 Pc's	
602	8061810	DOOR INNER	1 Pc's	
602-a	8902068	SCREW PTK 40X14 WN1453 PF FZB	5 Pc's	
604	8061813-86	HANDLE DOOR BLACK	1 Pc's	
606	8061803-26	HINGE UPPER, COMPLETE BLACK	1 Pc's	
606	8061803-86	HINGE UPPER COMPL. BLACK	1 Pc's	
606	8061805-86	HINGE UPPER BLACK	1 Pc's	
606	8061805-26	HINGE UPPER BLACK	1 Pc's	
606	8061805	HINGE UPPER	1 Pc's	
606-a	8901097	SCREW MRT-TT 4X12 FZB T20	2 Pc's	
606-b	8901619	POP-RIVET AL/ST 4X10	1 Pc's	
608	8061807-26	HINGE LOWER COMPL. BLACK	1 Pc's	
608	8061806-26	HINGE LOWER BLACK	1 Pc's	
608	8061806-86	HINGE LOWER BLACK	1 Pc's	
608	8061807-86	HINGE LOWER COMPL. BLACK	1 Pc's	
608-a	8900338	SCREW RTK ST 4,2X9,5 FZB WAX.	2 Pc's	
608-b	8901097	SCREW MRT-TT 4X12 FZB T20	1 Pc's	
610	8063893	MAGNET LOCK SS COMPL.	1 Pc's	
611	8061886	HOLDER MAGNET LOCK TD20	1 Pc's	
612	8061815	DOOR SEAL OUTER	1 Pc's	
613	8065840	FILTER HOLDER COMPL.	1 Pc's	
614	8065274	SEALING FILTER BRACKET	1 Pc's	
615	8061812	DOUBLE FLUFF FILTER	1 Pc's	
616	8061865-33	HINGE BEARING BLACK TD20	2 Pc's	
617	8061953-33	PLUG DOOR BLACK TD20	1 Pc's	
618	8801250	KIT SEALINGSTRIP FILTERHOLDER	1 Pc's	
619	8064240	PIN DOOR SWITCH DRYER	1 Pc's	

S:\UW\wmd201_TryckunderlagiKopplingschema8061866 TD33_44, TDC33_44, TDC33_441866-05.dft .mast , 2002-05-15 11:00:46

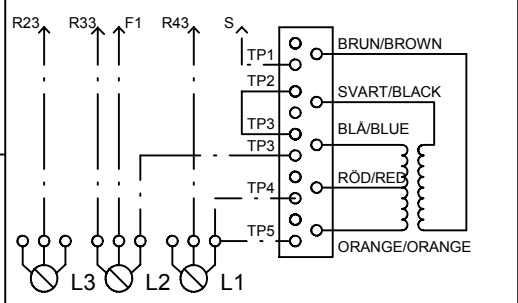
- ELL: VÄRMEELEMENT, LAG EFFEKT
HEATER, LOW POWER
- ELH: VÄRMEELEMENT, HÖG EFFEKT
HEATER, HIGH POWER
- T1: THERMOSTAT
- T2: THERMOSTAT
- T3: THERMOSTAT
- OF: ÖVERSVÄMNINGSBRYTARE
OVERFLOW PROTECTION SWITCH
- REC: UTTAG TVÄTTMASKIN
OUTLET WASHING-MACHINE
- BO: BOTTEN
BOTTOM
- ILA: INDIKERINGSLAMPA
INDICATION LAMP
- R: RELÄ
RELAY
- S: SÄKRING
FUSE
- F: FILTER
- AP: AVLOPPSPUMP
DRAIN PUMP
- MO: MOTOR
- TH: THERMISTOR
- BE: BELYSNING
ILLUMINATION
- LB: DOOR SWITCH
- INKB: MAIN TERMINAL BLOCK
INKOPPLINGSPLINT

- TB: TRYCKBRYTARE
PUSH BUTTON SWITCH
- PCU: PROGRAM KONTROLLENHET
PROGRAM CONTROL UNIT
- KCU: KNAPPSATS MED DISPLAY
USERS INTERFACE

--- INTERNAL CONNECTION
--- INTERN KOPPLING
- - - ALTERNATIVE WIRING
- - - ALTERNATIV KOPPLING



KOPPLING 3-FAS UTAN NOLLA / WIRING 3-PHASE WITHOUT NEUTRAL



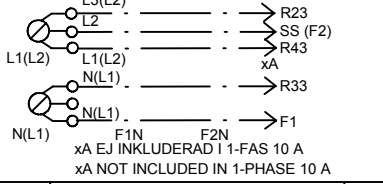
POWER ON, PROGRAM IN STANDBY, DOOR CLOSED

- ST1-1 - ST11-1 230 Vac
- ST2-1 - ST2-2 0 Vac (TD44)
- ST3-1 - ST3-2 0 V (TD44) CLOSED SWITCH
- ST3-1 - ST3-2 13 Vdc (TD44) OPEN SWITCH
- ST5-1 - ST5-4 15 Vdc
- ST5-2 - ST5-3 1-15 mVdc DEPENDING ON THE HUMIDITY
- ST6-1 - ST6-2 5 Vdc THERMISTOR DISCONNECTED
- ST7-1 - ST7-3 0 V
- ST7-5 - ST7-3 0 v
- ST8-1 - ST8-2 13 Vdc
- ST8-3 DATA IN
- ST8-4 CLOCK
- ST8-5 DATA OUT

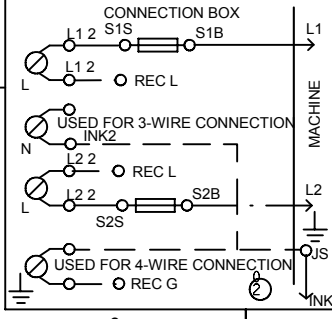
PROGRAM RUNNING

- ST1-1 - ST11-1 230 Vac
- ST1-1 - ST1-3 230 Vac
- ST1-1 - ST1-4 230 Vac
- ST2-1 - ST2-2 230 Vac (TD44) 30 SECONDS EACH 4 MINUTES
- ST3-1 - ST3-2 0 V (TD44) CLOSED SWITCH
- ST3-1 - ST3-2 13 Vdc (TD44) OPEN SWITCH
- ST5-1 - ST5-4 15 Vdc
- ST5-2 - ST5-3 1-15 mVdc DEPENDING ON THE HUMIDITY
- ST6-1 - ST6-2 5 Vdc THERMISTOR DISCONNECTED
- ST7-1 - R24 230 Vac HEATER ON
- ST7-5 - R44 230 Vac HEATER ON
- ST8-1 - ST8-2 13 Vdc
- ST8-3 DATA IN
- ST8-4 CLOCK
- ST8-5 DATA OUT

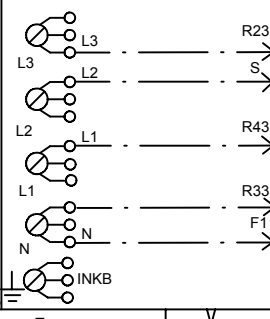
KOPPLING 1-FAS / WIRING 1-PHASE
NUMMER INOM () GÄLLER FÖR USA & CANADA
NUMMERS IN () VALID FOR USA & CANADA



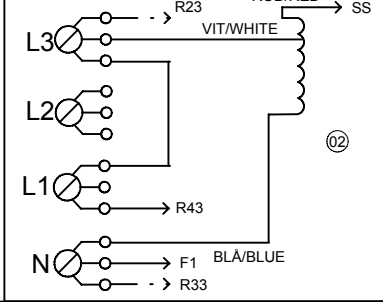
FUSE CONNECTION FOR USA & CANADA



KOPPLING 3-FAS / WIRING 3-PHASE



WIRING JAPAN



Pos.	Qty	Part No.	Name of item	Material
Material		Dens.Kg/dm3		Dimensions, Type, etc.
Scale		Gen.tolerance		Description(ENG)
Designed by		Gen.tol.Angle		CIRCUIT DIAGRAM TD33A/44A, TDC33/44, TD30/40
Released by		Iss by Dept Year Week		Description(SE)
		UT 98 05		KOPPLINGSSCHEMA TD33A/44A, TDC33/44, TD30/40
ASKO CYLINDA			80 618 66 05	Rev Ind Replace Project 8061866 rev:04
Rev ind	Revision	Appd	Year Week	

This document must not be copied without our written permission, and the contents thereof must not be imparted to a third party without the prior written permission and consent of the person or the department in charge of its preparation. This document will be processed.

