

PROFESSIONAL TUMBLE DRYER

6,5kg

CONDENSED VERSION

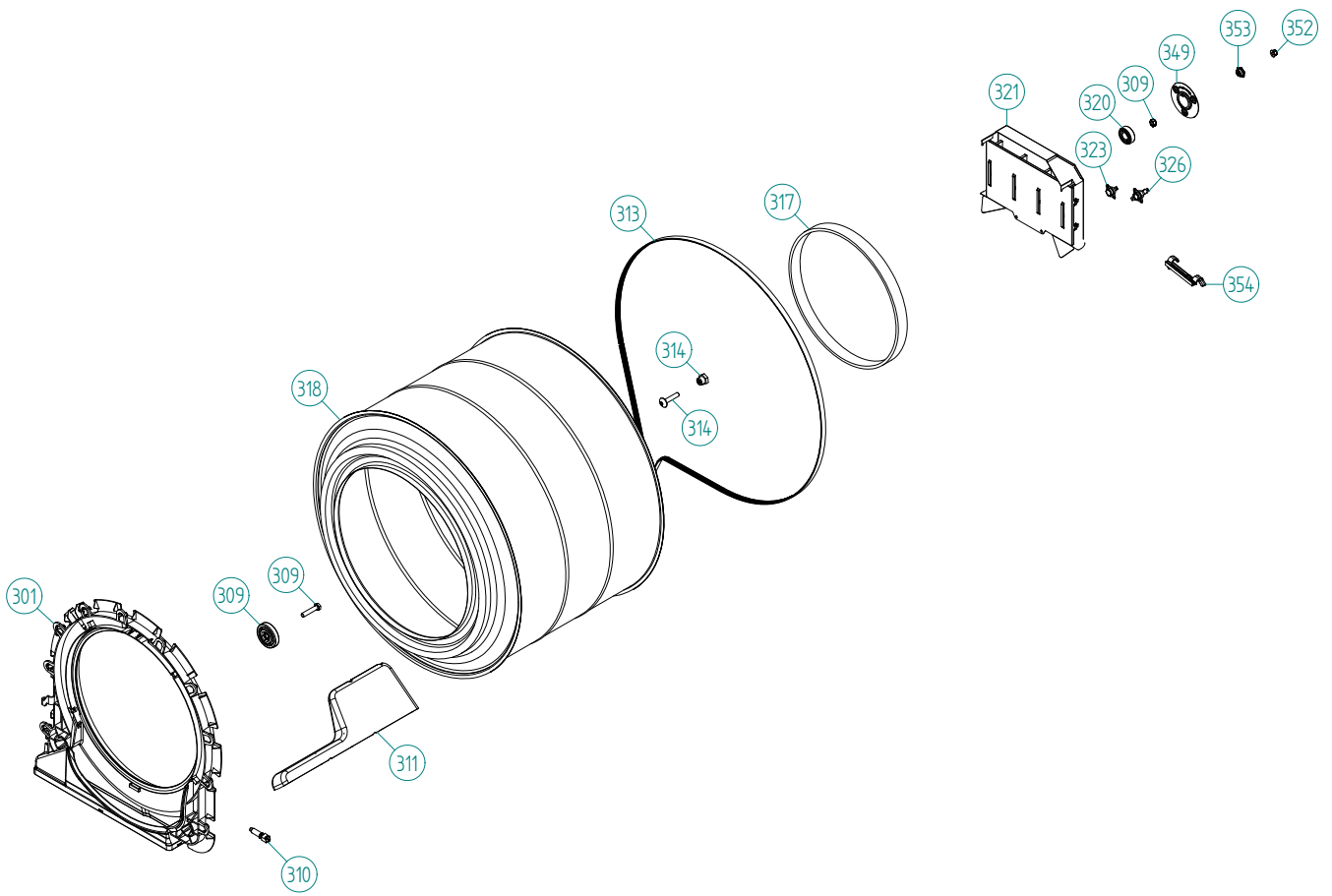


SPARE PARTS MANUAL

549221

Publication date: 28 Jun 2012

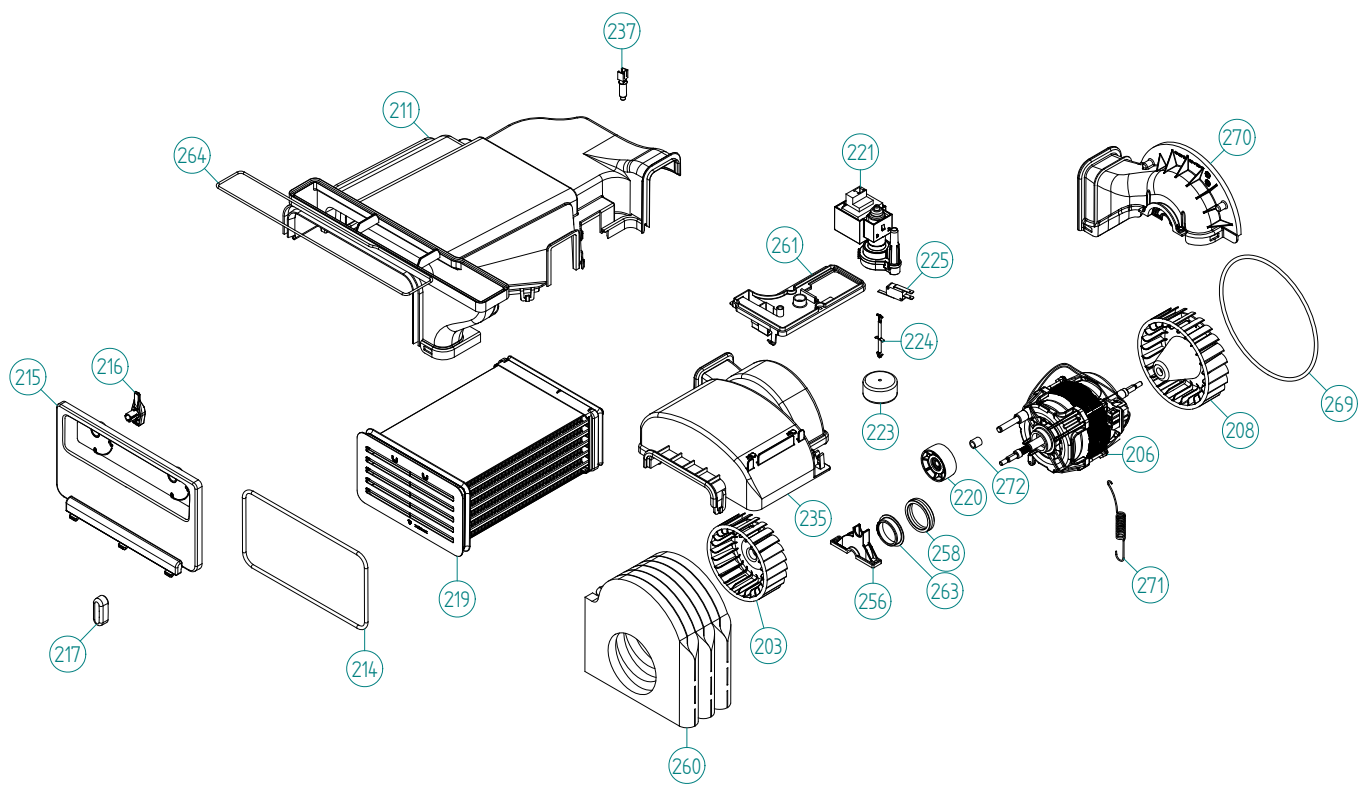
Cylinder and related parts



Cylinder and related parts

Titanium (TD70.C)

Pos	Spare Part No.	Description	Qty	Comment
301	8801494	FRONTFRAME CPL. TD70 INCL.SEAL	1 Pc's	
301-a	8901971	SCREW C1-PTK 35X14 WN1453 T15	4 Pc's	
309	8093182	SUPPORT WHEEL INT. BALL BEAR.	2 Pc's	
309-a	8901337	WASHER BRB 8,4X16 HB 200 GALV	2 Pc's	
309-b	8901193	NUT LOC-KING 8 BH8 GALV	2 Pc's	
309-c	8901031	SCREW BUFO 8.8 8X40 GALV	2 Pc's	
310	8083344	THERMISTOR TD	1 Pc's	
311	8052589-49	PADDLE TD	2 Pc's	
311-a	8902099	SCREW PTK 50X14 WN1452 FZB T20	5 Pc's	
313	8082133	BELT DRYER TD70	1 Pc's	
314	8082453	BEARING BUSHING SHORT	1 Pc's	
314-a	8088429	SCREW M8 A4 T40	1 Pc's	
317	8083190	FELTSEALING REAR W. FOAM	1 Pc's	
318	8091023-R	CYLINDER COMPL. TD	1 Pc's	
320	8004439	BALL BEARING SKF 6202-2Z/C3Q66	1 Pc's	
321	8091618	HEATING ELEMENT 2500W 3-PHASE	1 Pc's	
323	8079200	THERMOSTAT 135C TD	1 Pc's	
326	8090272	THERMOSTAT 150 MANUEL RESET	1 Pc's	
349	8082126	BEARING BRACKET	1 Pc's	
349-a	8902362	SCREW RTK ST 4,2X9,5 FZB WAX.	3 Pc's	
352	8902365	FLANGE NUT DIN6926 KL.8 M6 FZB	1 Pc's	
353	8082464	NUT BEARING LOCK	1 Pc's	
354	8082467	CABLE HOLDER HEATING ELEMENT	1 Pc's	

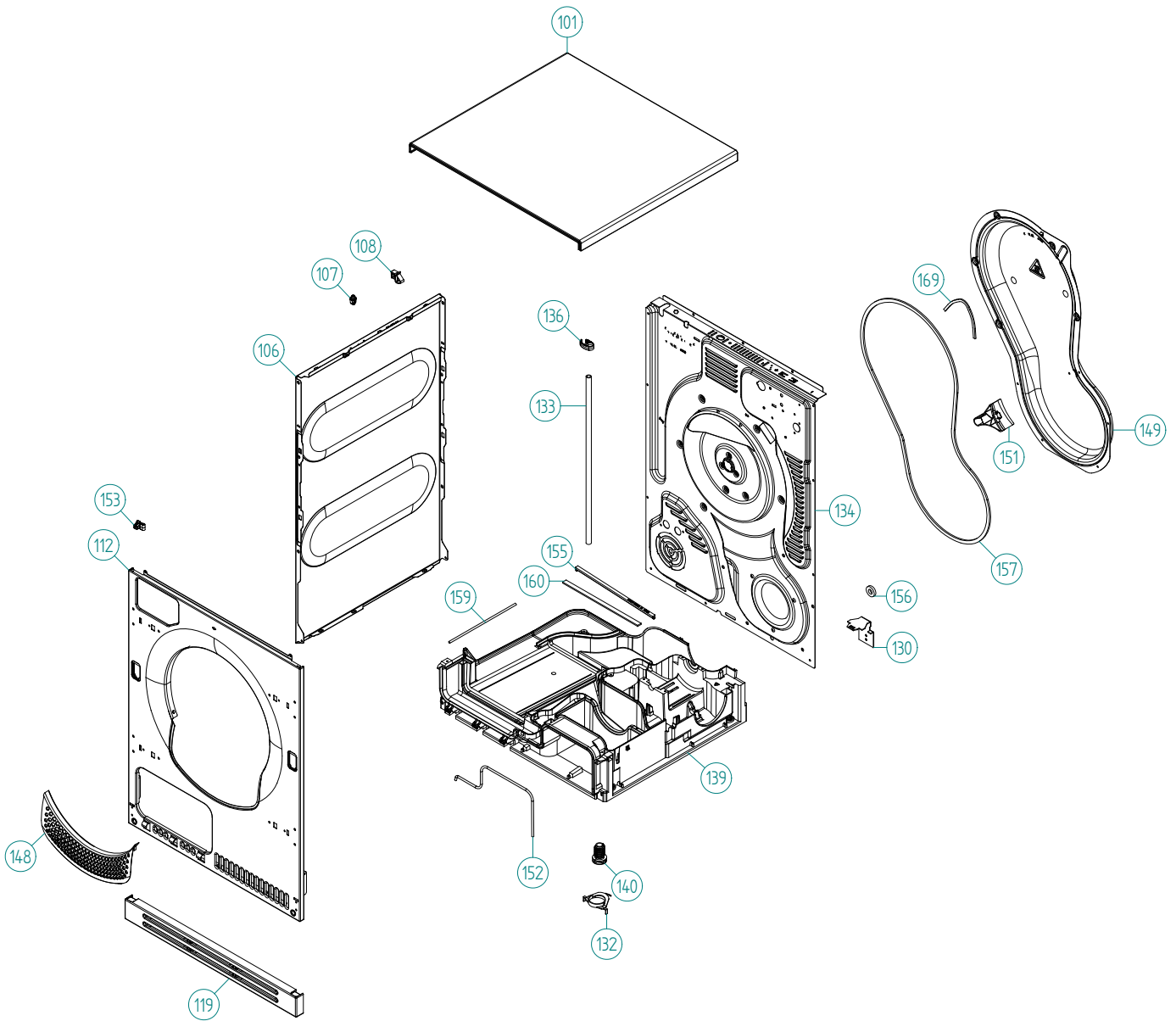


Lower session

Titanium (TD70.C)

Pos	Spare Part No.	Description	Qty	Comment
203	8082127	FAN WHEEL EXTERNAL COND. UL4	1 Pc's	
206	8083915	MOTOR 50HZ	1 Pc's	
208	8082125	FAN WHEEL INTERNAL COND. UL4	1 Pc's	
211	8082105	COVER CONDENSER UL4	1 Pc's	
211-a	8902087	SCREW PTK 40X14 WN1452 FZB T20	7 Pc's	
214	8082108	SEALING CONDENSER LID	1 Pc's	
215	8082107-81	CONDENSER LID TITANIUM	1 Pc's	
216	8082121	LOCK CATCH CONDENSER LID	2 Pc's	
217	8077507-49	KNOB CONDENSER LID	2 Pc's	
217-a	8902085	SCREW PT KB40X10 WN1442 RFS	2 Pc's	
219	8083902	CONDENSER COMPL.	1 Pc's	
220	8091899	TENSION WHEEL EMBEDDED BEARING	1 Pc's	
221	8801427	COND. WATERPUMP COMPL. 50HZ	1 Pc's	
223	8053056	FLOAT	1 Pc's	
224	8091858	FLOAT PIN TD70	1 Pc's	
225	8076103	MICROSWITCH FLOAT TD25	1 Pc's	
235	8082116	COVER EXTERNAL INLET UL4	1 Pc's	
237	8083344	THERMISTOR TD	1 Pc's	
256	8082454	ENGINE BEARING FITTING	1 Pc's	
256-a	8902087	SCREW PTK 40X14 WN1452 FZB T20	2 Pc's	
258	8082455	RUBBER DAMPER ENGINE BEARING	2 Pc's	
260	8091434	SOUND ABSORBER INLET CONDENSE	1 Pc's	
261	8082132	COVER CONDENSATE RESERVOIRE	1 Pc's	
263	8082456	SLIDEER ENGINE BEARING	2 Pc's	
264	8088417	SEALING FRONT FRAME-COVER	1 Pc's	
269	8088416	SEALING FAN HOUSE	1 Pc's	
270	8082310	COVER INNER DUCT UL4	1 Pc's	
270-a	8902087	SCREW PTK 40X14 WN1452 FZB T20	2 Pc's	
271	8082161	BELT TENSIONER SPRING	1 Pc's	
272	8091071	SPACER SLEEVE	1 Pc's	

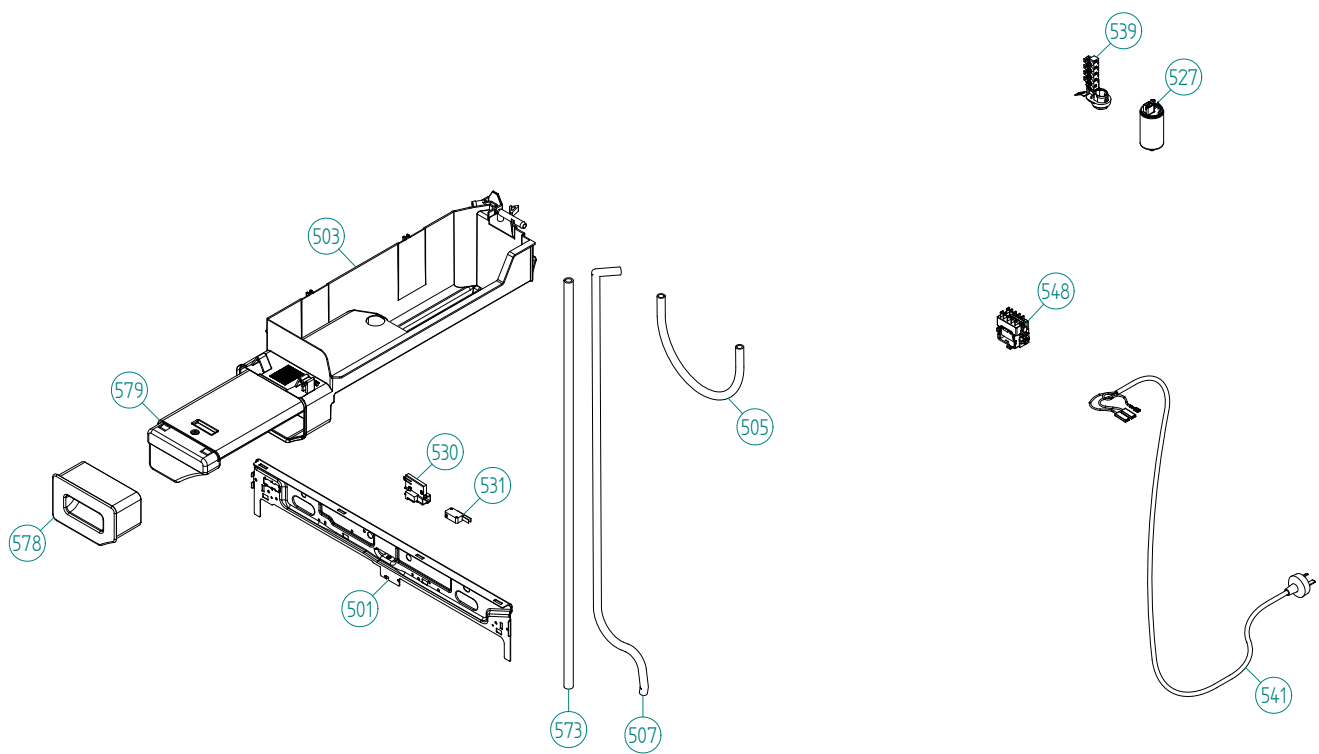
Outer casing



Outer casing

Titanium (TD70.C)

Pos	Spare Part No.	Description	Qty	Comment
101	8061817-81	TOP COVER GREY METALLIC	1 Pc's	
101-a	8900338	SCREW RTK ST 4,2X9,5 FZB WAX.	3 Pc's	
101-b	8901413	LOCK WASHER AZ 4,3 GALV	2 Pc's	
106	8082134-81	SIDE PANEL GREY METALLIC	2 Pc's	
106-a	8902087	SCREW PTK 40X14 WN1452 FZB T20	2 Pc's	
107	8061763	GUIDE FRONT PLATE/TOP COVER	3 Pc's	
108	8061916	CABLE HOLDER WMD20 UL4	1 Pc's	
112	8082109-GHC-81	FRONT PANEL TD70 GREY METALLIC	1 Pc's	
112-a	8902087	SCREW PTK 40X14 WN1452 FZB T20	2 Pc's	
112-b	8902362	SCREW RTK ST 4,2X9,5 FZB WAX.	1 Pc's	
119	8077511-81	PLINTH CONDENSER	1 Pc's	
130	8053980	TIP GUARD SURFACE CONDITIONED	1 Pc's	
130-a	8900327	SCREW RTS ST 4,2X13 FZB T20	1 Pc's	
132	8064114	CUP SELF ADHESIVE,IN BAG(2pcs)	1 Pc's	
133	8054733	RUBBER HOSE 9X13X2000	1 Pc's	
134	8082112-AC	REAR PANEL	1 Pc's	
134-a	8901971	SCREW C1-PTK 35X14 WN1453 T15	2 Pc's	
134-b	8902362	SCREW RTK ST 4,2X9,5 FZB WAX.	6 Pc's	
134-c	8902087	SCREW PTK 40X14 WN1452 FZB T20	3 Pc's	
136	8082459	HOSE CLIP	1 Pc's	
139	8082103	BASE UL4	1 Pc's	
140	8082296	PLASTIC FOOT	4 Pc's	
148	8093232-49	DECORE COVER FRONT FRAME GREY	1 Pc's	
149	8082113-B	PANEL REAR COVER	1 Pc's	
149-a	8902362	SCREW RTK ST 4,2X9,5 FZB WAX.	10 Pc's	
151	8082114	INSERT REAR COVER	1 Pc's	
152	8090337	SEALING FRONTPANEL-EXT.INLET	1 Pc's	
153	8083205	SNAP-IN BRACKET FRONT PANEL	4 Pc's	
155	8082457	COVER DRAINING DITCH	1 Pc's	
156	8094236	SEALING DRAINING PIPE	1 Pc's	
157	8094235	SEAL. STRIP W. ADHE. 9X4 SILI.	1 Pc's	
159	8082311	SEALING INT.-EXT.AIR CONDENSE	1 Pc's	
160	8092325	SEALING COVER DRAINING DITCH	1 Pc's	
169	8094312	ADHESIVE SEAL. STRIP 2X6 SILI.	1 Pc's	

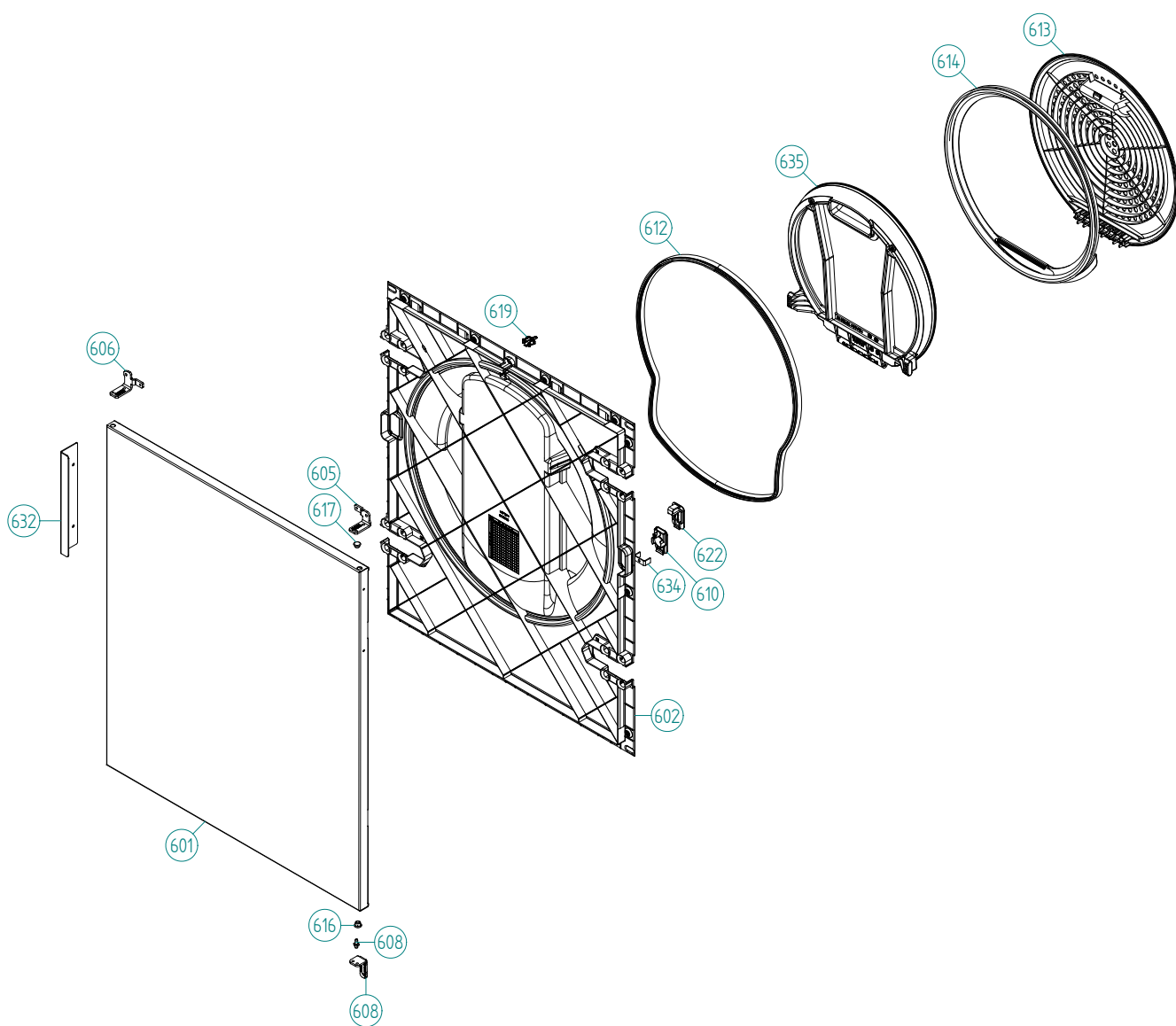


Upper session

Titanium (TD70.C)

Pos	Spare Part No.	Description	Qty	Comment
501	8076029	FRONTBEAM	1 Pc's	
501-a	8902087	SCREW PTK 40X14 WN1452 FZB T20	1 Pc's	
503	8077502-49	HOUSING WATER TANK	1 Pc's	
503-a	8902087	SCREW PTK 40X14 WN1452 FZB T20	2 Pc's	
505	8057431	RUBBER HOSE 9X13X500	1 Pc's	
507	8088419	RUBBER HOSE 9X13X1145	1 Pc's	
527	8076202	EMC-FILTER WITH INDUCTOR	1 Pc's	
527-a	8901155	NUT M6M8 BH8 GALV	1 Pc's	
527-b	8901419	LOCK WASHER AZ 8,4 GALV	1 Pc's	
529	8090219	CABLE BUNDLE TD70.C CONDENSE	1 Pc's	
530	8077519	BRACKET FOR DOOR SWITCH	1 Pc's	
531	8073836	MICROSWITCH DOOR	1 Pc's	
539	8061660	TERMINAL BLOCK 5-POLE	1 Pc's	
539-a	8901097	SCREW MRT-TT 4X10 FZB T20	1 Pc's	
541	8078983	MAINS CABLE 5X1.5X2000 90C	1 Pc's	
548	8064179	CONTACTOR 4S 50/60HZ	1 Pc's	
573	8088425	RUBBER HOSE 10X15X800	1 Pc's	
578	8077501-81	HANDLE WATER TANK	1 Pc's	
579	8077503	WATERTANK	1 Pc's	
588	8083019	CABLE SET LB TD UL4	1 Pc's	

Outer door

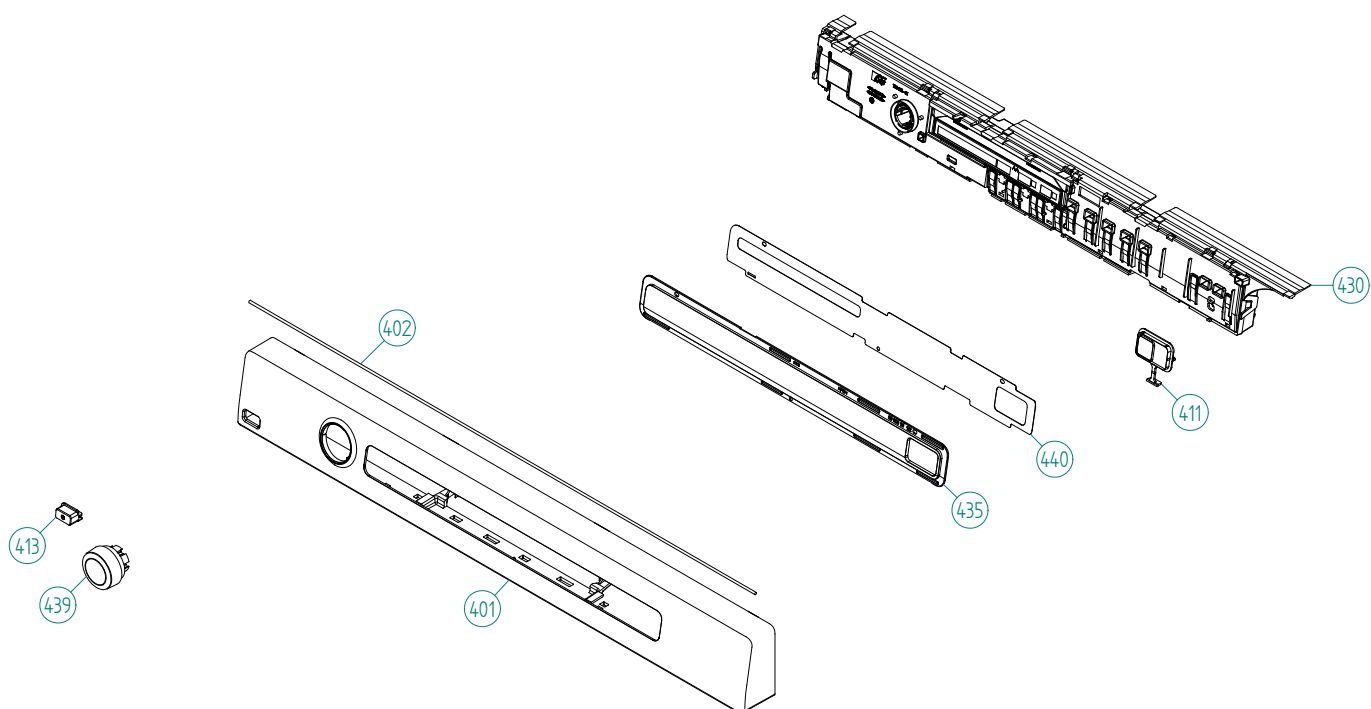


Outer door

Titanium (TD70.C)

Pos	Spare Part No.	Description	Qty	Comment
601	8076033-KK-81	OUTER DOOR COMM.	1 Pc's	
601-a	8900352	SCREW RTS ST 4,2X13 FZB TORX/J	6 Pc's	
602	8082111-49	DOOR INNER PART	1 Pc's	
605	8077599-81	HINGE UPPER R	1 Pc's	
605-a	8900327	SCREW RTS ST 4,2X13 FZB T20	2 Pc's	
605-b	8901097	SCREW MRT-TT 4X10 FZB T20	1 Pc's	
605-c	8061804	HINGE PIN	1 Pc's	
606	8079489-81	HINGE UPPER L	1 Pc's	
606-a	8900327	SCREW RTS ST 4,2X13 FZB T20	2 Pc's	
606-b	8901097	SCREW MRT-TT 4X10 FZB T20	1 Pc's	
606-c	8061804	HINGE PIN	1 Pc's	
608	8076032-81	HINGE DOOR LOWER	1 Pc's	
608-a	8901097	SCREW MRT-TT 4X10 FZB T20	2 Pc's	
608-b	8061804	HINGE PIN	1 Pc's	
610	8080101-49	MAGNET LOCK COMPL.	1 Pc's	
610-a	8902087	SCREW PTK 40X14 WN1452 FZB T20	1 Pc's	
612	8087917	SEALING INNER DOOR	1 Pc's	
613	8083220-49	FILTER HOLDER GREY	1 Pc's	
614	8087916	SEALING FILTER HOLDER	1 Pc's	
616	8061865-81	HINGE BEARING GREY	2 Pc's	
617	8061953-81	PLUG DOOR GREY	1 Pc's	
619	8077488-49	DOOR PIN	1 Pc's	
622	8076079-49	COVER FOR LOCK/LOCK HOOK	1 Pc's	
632	8083380-81	HANDLE TD60.C	1 Pc's	
634	8081680	TINPLATE MAGNETIC CATCH	1 Pc's	
635	8801511	LINT FILTER COMPL. TD70	1 Pc's	

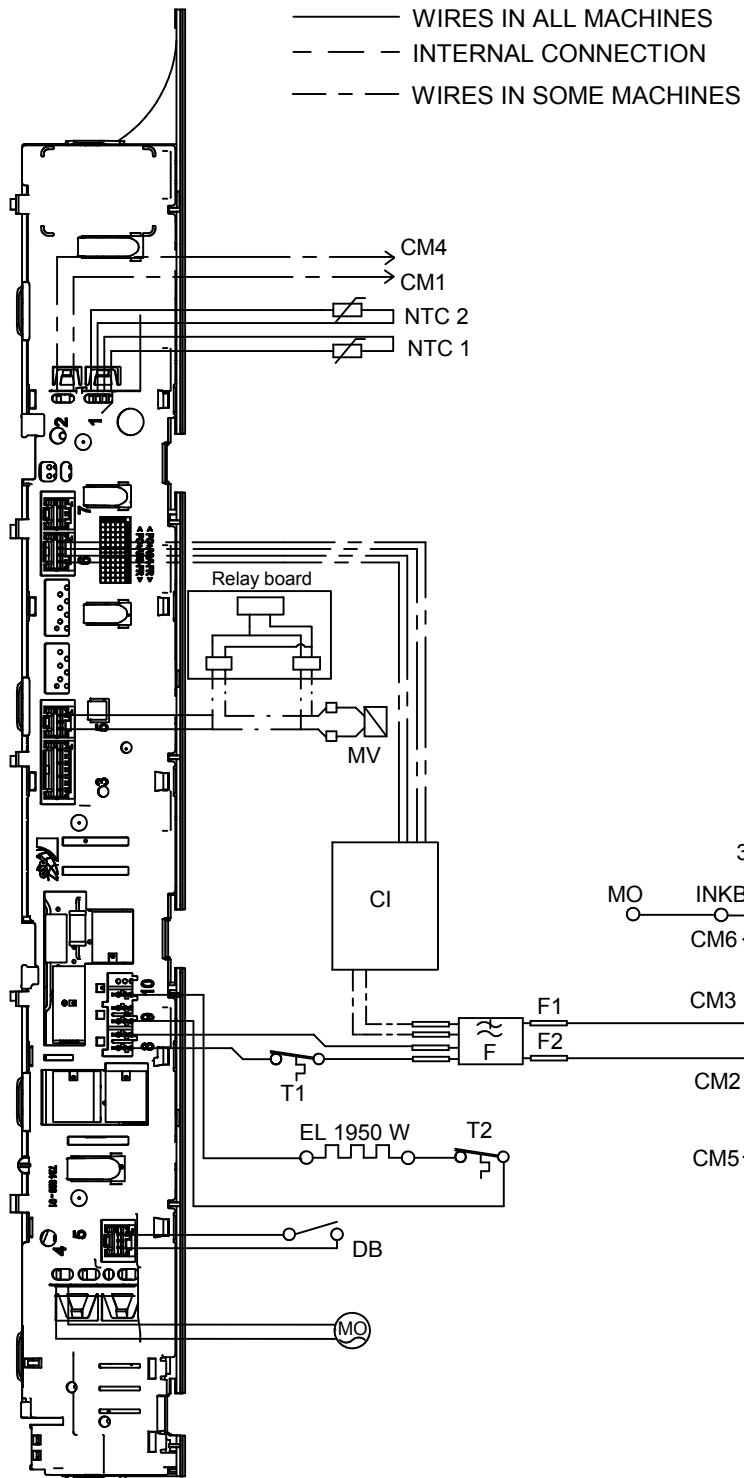
Control panel



Control panel

Titanium (TD70.C)

Pos	Spare Part No.	Description	Qty	Comment
401	8080887-69	PANEL WMD60.2 MECH. UL4	1 Pc's	
402	8091791	O-RING CORD D=3,1	0 Pc's	
402	8079749	O-RING CORD CELLULAR RUBBER	1 Pc's	
411	8081749-69	PUSHBUT. START/STOP PRINTED TD	1 Pc's	
413	8081710-69	PUSHBU. MAINSWITCH WMD60.2 UL4	1 Pc's	
430	8801502	CONTROL UNIT TD70 PROF. HP HWC	1 Pc's	
435	8083316	LENS 0-OPTIONS WMD60.2	1 Pc's	
439	8083075-69	KNOB OEM WMD60.2	1 Pc's	
440	8083375-81	DECOR PLATE 0-OPTIONS WMD60.C	1 Pc's	
469	8086440	CABLE SET COIN BOX	1 Pc's	
469	8083064	CABLE SET COIN OP. WMD60.C	1 Pc's	



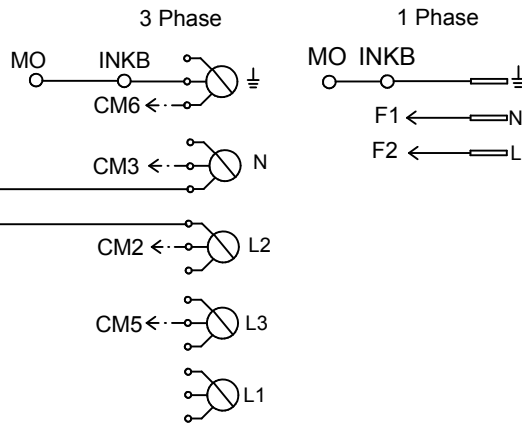
——— WIRES IN ALL MACHINES
 - - - INTERNAL CONNECTION
 - - - WIRES IN SOME MACHINES

CABLE POSITIONS

- 1: THERMISTOR
- 2: COINMETER
- 4: MOTOR, DRAIN PUMP, FLOAT SWITCH
- 5: DOOR SWITCH
- 6: COMMUNICATIONS INTERFACE
- 8: POWER
- 9: HEATING ELEMENT

RESISTANCES AT ROOM TEMPERATURE (CA. 20°C/68°F)
 VALUES WITH +/-10% ARE REGARDED AS NORMAL
 COMPONENT

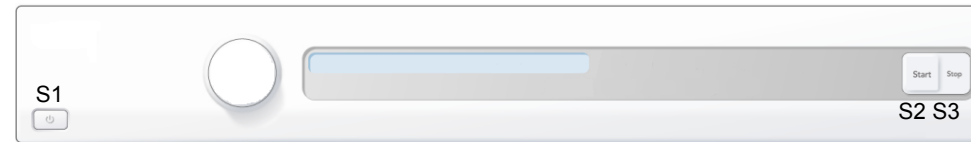
- F: RADIO INTERFERENCE SUPPRESSION FILTER 680K Ohm
- NTC 1: THERMISTOR 1 4 - 6 K Ohm
- NTC 2: THERMISTOR 2: 4 - 6 K Ohm
- EL: HEATING ELEMENT 1950W 20.5 Ohm
- MO: MOTOR
- T1: THERMOSTAT
- T2: THERMOSTAT
- DB: DOOR SWITCH
- CI: COMMUNICATIONS INTERFACE
- MV: MAGNETIC VALVE 866 Ohm



CONNECTOR FOR COIN METER

If coin meter is selected CM1 and CM4 needs to be closed to start the machine (default closed with jumper)

BLACK	CM1	FROM CONTROL UNIT
BROWN	CM2	PHASE
BLUE	CM3	NEUTRAL
BLACK	CM4	FROM CONTROL UNIT
BLUE	CM5	
YELLOW-GREEN	CM6	GROUND



SERVICE MENU

- TURN OFF POWER (S1)
- WAIT FOR AT LEAST 5 SEC
- HOLD S2
- TURN ON POWER (S1)
- PRESS S2 5 TIMES TO ENTER SERVICE MENU

- PRESS STOP (S3) TO CHANGE MENU STEP
- ROTATE DIAL TO CHANGE IN STEP
- PRESSING START (S2) STORES AND EXITS SERVICE MENU

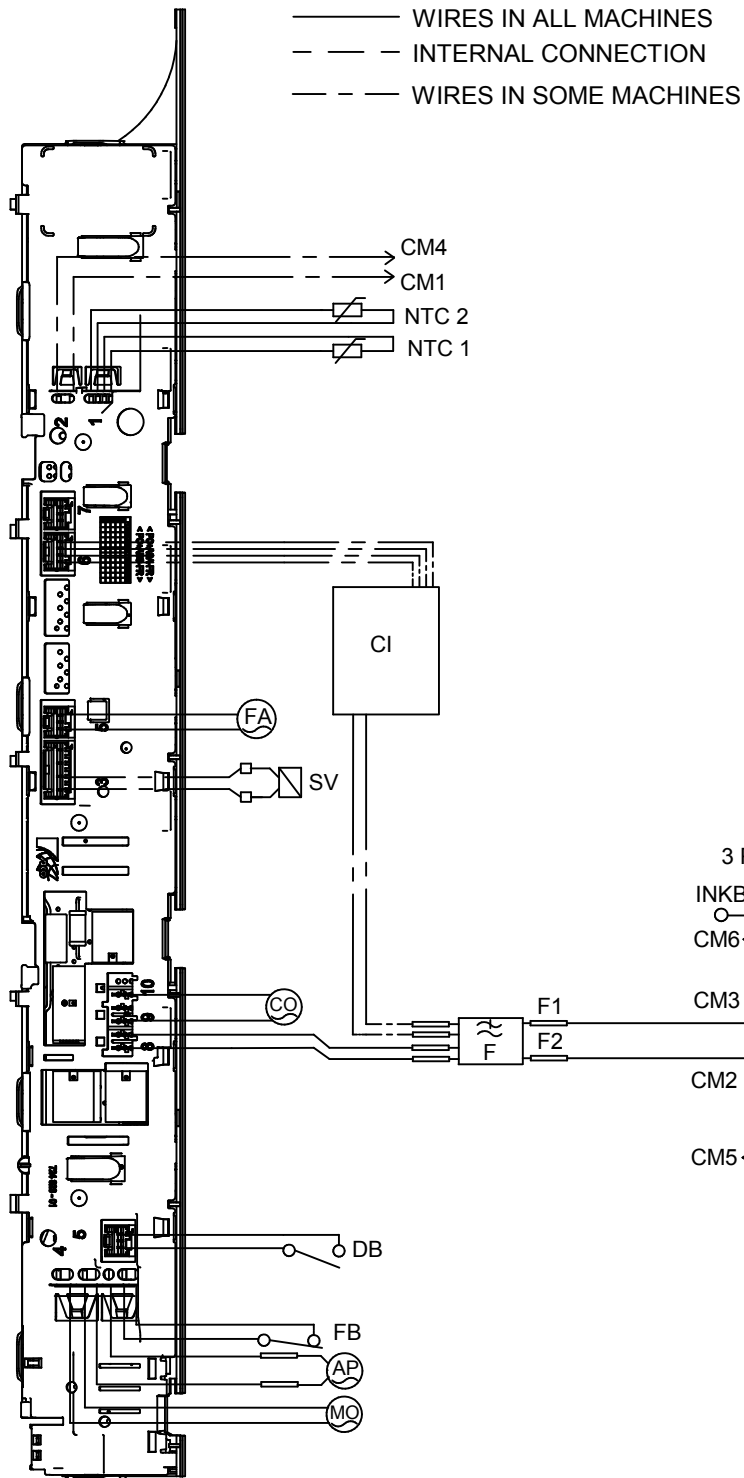
USER SETTINGS MENU

- TURN OFF POWER (S1)
- WAIT FOR AT LEAST 5 SEC
- HOLD S3
- TURN ON POWER (S1)
- PRESS S3 5 TIMES TO ENTER MENU

2011-07-07

CIRCUIT DIAGRAM TD70.C HWC

80 902 89 - 00



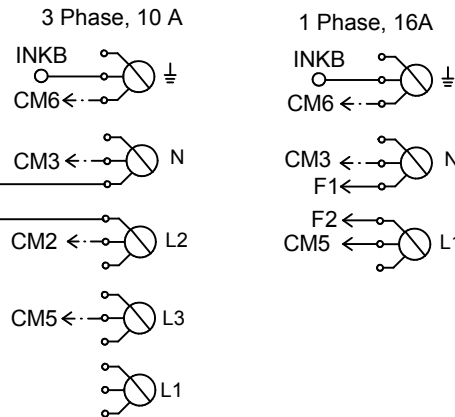
——— WIRES IN ALL MACHINES
 - - - INTERNAL CONNECTION
 - - - WIRES IN SOME MACHINES

CABLE POSITIONS

- 1: THERMISTOR
- 2: COINMETER
- 4: MOTOR, DRAIN PUMP, FLOAT SWITCH
- 5: DOOR SWITCH
- 6: COMMUNICATIONS INTERFACE
- 8: POWER
- 9: HEATING ELEMENT

RESISTANCES AT ROOM TEMPERATURE (CA. 20°C/68°F)
 VALUES WITH +/-10% ARE REGARDED AS NORMAL COMPONENT

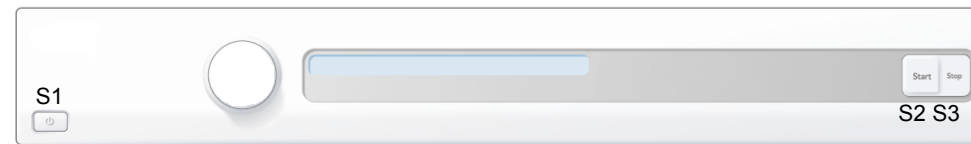
- F: RADIO INTERFERENCE SUPPRESSION FILTER 680K Ohm
- NTC 1: THERMISTOR 1 4 - 6 K Ohm
- NTC 2: THERMISTOR 2: 4 - 6 K Ohm
- AP: DRAIN PUMP: 111 Ohm
- CO: COMPRESSOR
- MO: MOTOR
- FB: FLOAT SWITCH
- DB: DOOR SWITCH
- CI: COMMUNICATIONS INTERFACE
- SV: SWITCHING VALVE
- FA: FAN



CONNECTOR FOR COIN METER

If coin meter is selected CM1 and CM4 needs to be closed to start the machine (default closed with jumper)

BLACK	CM1	FROM CONTROL UNIT
BROWN	CM2	PHASE
BLUE	CM3	NEUTRAL
BLACK	CM4	FROM CONTROL UNIT
BLUE	CM5	PHASE
YELLOW-GREEN	CM6	GROUND



SERVICE MENU

- TURN OFF POWER (S1)
- WAIT FOR AT LEAST 5 SEC
- HOLD S2
- TURN ON POWER (S1)
- PRESS S2 5 TIMES TO ENTER SERVICE MENU

- PRESS STOP (S3) TO CHANGE MENU STEP
- ROTATE DIAL TO CHANGE IN STEP
- PRESSING START (S2) STORES AND EXITS SERVICE MENU

USER SETTINGS MENU

- TURN OFF POWER (S1)
- WAIT FOR AT LEAST 5 SEC
- HOLD S3
- TURN ON POWER (S1)
- PRESS S3 5 TIMES TO ENTER MENU

2011-12-28

CIRCUIT DIAGRAM TD70.C HP

80 902 90 - 01